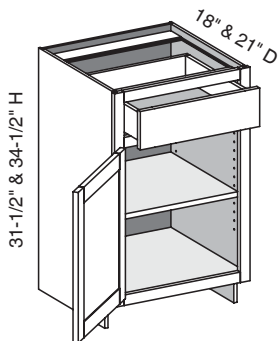


VB/CSB - Vanity Base



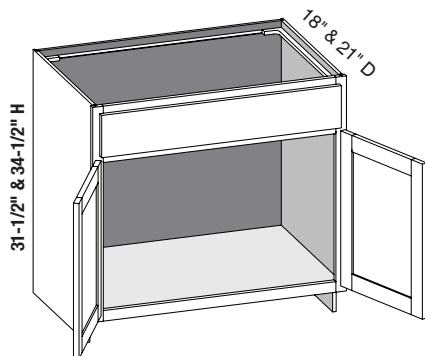
EXP	FL	FUE	SS	PFD	EXT	FT	SBR	LE	TSS	OS	NSH	WS	MI	DT	NB
✓	✓	✓	✓	✓	✓	✓	✓	✓	✓	✓	✓	✓	✓	✓	

Custom Size Ranges
Width: 12" – 24"
Height: 31-1/2" – 42"
Depth: 12", 15", 18", 21",
24", 27", 30"

- When height changes, lower opening height changes. Upper opening height fixed at 5".
- Specify single or butt doors on custom size cabinets 24" wide.

Cabinet Code	
VB1231.5	VB1234.5
VB1531.5	VB1534.5
VB1831.5	VB1834.5
VB2131.5	VB2134.5

VS/CSBS - Vanity Sink w/Butt Doors



EXP	FL	FUE	SS	PFD	EXT	FT	SBR	LE	TSS	OS	NSH	WS	MI	DT	NB
✓	✓	✓	✓	✓	✓	✓	✓	✓	✓	STD	STD		✓		

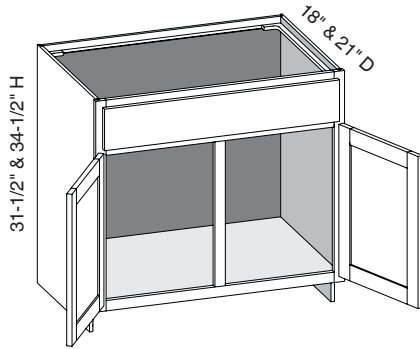
Custom Size Ranges
Width: 24" – 36"
Height: 31-1/2" – 42"
Depth: 18" – 30"

- False drawer front.
- No drawer box, shelf support holes or shelf with sink units.
- When height changes, lower opening height changes. Upper opening height fixed at 5".
- Specify single or butt doors on custom size cabinets 24" wide.

Cabinet Code	
VS2431.5BD	VS2434.5BD
VS2731.5BD	VS2734.5BD
VS3031.5BD	VS3034.5BD
VS3331.5BD	VS3334.5BD
VS3631.5BD	VS3634.5BD

Options Key: EXP = Exposed End(s) FL = Flush End(s) FUE = Flush Unexposed End(s) SS = Shaped Side PFD = Prep for False Door
EXT = Extended Stile(s) FT = Flush Toe SBR = Shaped Bottom Rail LE = Leg Extension TSS = Toe Space Side OS = Omit Shelving
NSH = No Shelf Holes WS = Solid Wood Shelves MI = Matching Interior DT = Dust Top NB = Natural Finished Bottom

VS/CSBS2D1D - Vanity Sink Two Door One Drawer



EXP	FL	FUE	SS	PFD	EXT	FT	SBR	LE	TSS	OS	NSH	WS	MI	DT	NB
✓	✓	✓	✓	✓	✓	✓	✓	✓	✓	STD	STD		✓		

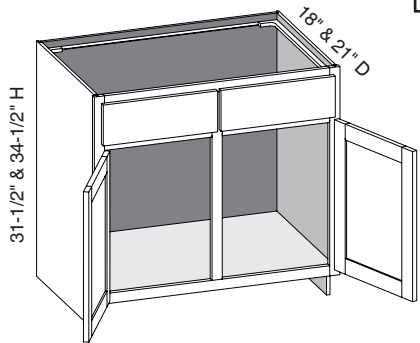
Custom Size Ranges
Width: 27" – 36"
Height: 31-1/2" – 42"
Depth: 18" – 30"

- False drawer front.
- When height changes, lower opening height changes. Upper opening height fixed at 5".

Cabinet Code

VS3031.5	VS3034.5
VS3331.5	VS3334.5
VS3631.5	VS3634.5

VSX/CSBS2D2D - Vanity Sink Two Door Two Drawer



EXP	FL	FUE	SS	PFD	EXT	FT	SBR	LE	TSS	OS	NSH	WS	MI	DT	NB
✓	✓	✓	✓	✓	✓	✓	✓	✓	✓	STD	STD		✓		

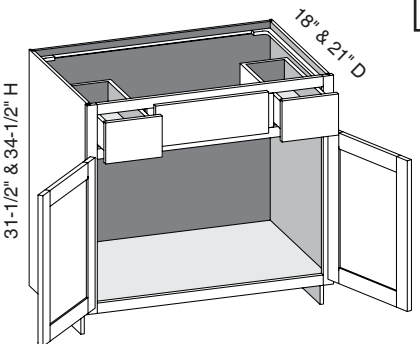
Custom Size Ranges
Width: 30" – 48"
Height: 31-1/2" – 42"
Depth: 18" – 30"

- False drawer fronts.
- When height changes, lower opening height changes. Upper opening height fixed at 5".

Cabinet Code

VSX3031.5	VSX3034.5
VSX3631.5	VSX3634.5

VBS/CSVBS - Vanity Base Sink w/Butt Doors



EXP	FL	FUE	SS	PFD	EXT	FT	SBR	LE	TSS	OS	NSH	WS	MI	DT	NB
✓	✓	✓	✓	✓	✓	✓	✓	✓	✓	STD	STD		✓		

Custom Size Ranges
Width: 36"
Height: 31-1/2" – 42"
Depth: 12", 15", 18", 21", 24", 27", 30"

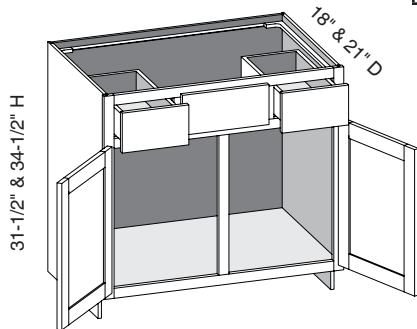
- False top middle drawer front.
- When height changes, lower opening height changes. Upper opening height fixed at 5".

Cabinet Code

VBS3631.5BD	VBS3634.5BD
-------------	-------------

Options Key: EXP = Exposed End(s) FL = Flush End(s) FUE = Flush Unexposed End(s) SS = Shaped Side PFD = Prep for False Door
EXT = Extended Stile(s) FT = Flush Toe SBR = Shaped Bottom Rail LE = Leg Extension TSS = Toe Space Side OS = Omit Shelving
NSH = No Shelf Holes WS = Solid Wood Shelves MI = Matching Interior DT = Dust Top NB = Natural Finished Bottom

VBS/CSVBS - Vanity Base Sink w/Center Stile



EXP	FL	FUE	SS	PFD	EXT	FT	SBR	LE	TSS	OS	NSH	WS	MI	DT	NB
✓	✓	✓	✓	✓	✓	✓	✓	✓	✓	STD	STD		✓		

Custom Size Ranges

Width: 36" – 48"

Height: 31-1/2" – 42"

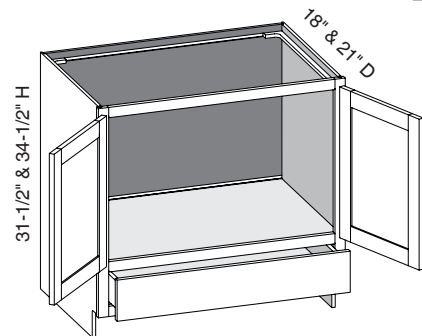
Depth: 12", 15", 18", 21"
24", 27", 30"

- False top middle drawer front.
- When height changes, lower opening height changes. Upper opening height fixed at 5".
- When width changes, middle opening width changes. Left and right opening widths fixed at 9".

Cabinet Code

VBS4231.5	VBS4234.5
VBS4831.5	VBS4834.5

VSRV/CSVSRV - Vanity Sink Reverse w/Butt Doors



EXP	FL	FUE	SS	PFD	EXT	FT	SBR	LE	TSS	OS	NSH	WS	MI	DT	NB
✓	✓	✓	✓	✓	✓	✓	✓	✓	✓	STD	STD		✓		

Custom Size Ranges

Width: 24" – 36"

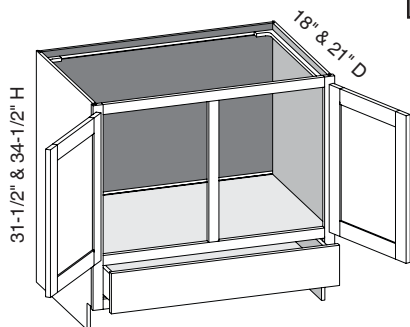
Height: 31-1/2" – 42"

Depth: 12", 15", 18", 21"
24", 27", 30"

- When height changes, top opening height changes. Lower opening height fixed at 5".

Cabinet Code

VSRV2431.5BD	VSRV2434.5BD
VSRV3031.5BD	VSRV3034.5BD
VSRV3631.5BD	VSRV3634.5BD

VSRV/CSVSRVCS - Vanity Sink Reverse w/Center Stile


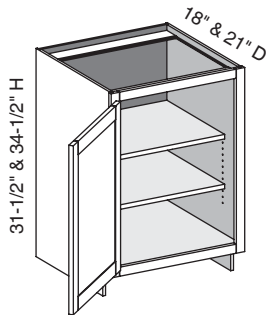
EXP	FL	FUE	SS	PFD	EXT	FT	SBR	LE	TSS	OS	NSH	WS	MI	DT	NB
✓	✓	✓	✓	✓	✓	✓	✓	✓	✓	STD	STD		✓		

Custom Size Ranges
Width: 30" – 36"
Height: 31-1/2" – 42"
Depth: 12", 15", 18", 21"
24", 27", 30"

- When height changes, top opening height changes. Lower opening height fixed at 5".

Cabinet Code

VSRV3031.5	VSRV3034.5
VSRV3631.5	VSRV3634.5

VBF/CSBFD - Vanity Base Full Door


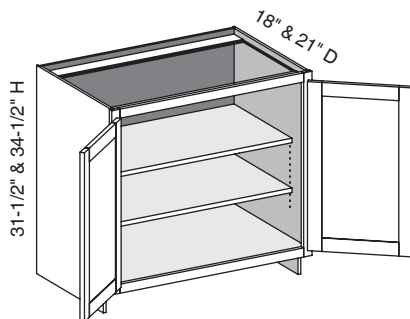
EXP	FL	FUE	SS	PFD	EXT	FT	SBR	LE	TSS	OS	NSH	WS	MI	DT	NB
✓	✓	✓	✓	✓	✓	✓	✓	✓	✓	✓	✓	✓	✓	✓	

Custom Size Ranges
Width: 9" – 24"
Height: 10" – 48"
Depth: 5-1/2" – 30"

- 10" – 22" high has no shelves.
- 22-1/16" – 28" high has one shelf.
- 28-1/16" – 40" high has two shelves.
- 40-1/16" – 48" high has three shelves.
- Specify single or butt doors on custom size cabinets 24" wide.

Cabinet Code

VBF1831.5	VBF1834.5
-----------	-----------

VBF/CSBFD - Vanity Base Full Door w/Butt Doors


EXP	FL	FUE	SS	PFD	EXT	FT	SBR	LE	TSS	OS	NSH	WS	MI	DT	NB
✓	✓	✓	✓	✓	✓	✓	✓	✓	✓	✓	✓	✓	✓	✓	

Custom Size Ranges
Width: 24" – 36"
Height: 10" – 48"
Depth: 5-1/2" – 30"

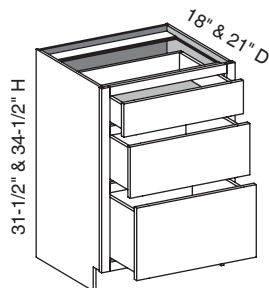
- 10" – 22" high has no shelves.
- 22-1/16" – 28" high has one shelf.
- 28-1/16" – 40" high has two shelves.
- 40-1/16" – 48" high has three shelves.
- Specify single or butt doors on custom size cabinets 24" wide.

Cabinet Code

VBF2431.5BD	VBF2434.5BD
VBF2731.5BD	VBF2734.5BD
VBF3031.5BD	VBF3034.5BD
VBF3631.5BD	VBF3634.5BD

Options Key: EXP = Exposed End(s) FL = Flush End(s) FUE = Flush Unexposed End(s) SS = Shaped Side PFD = Prep for False Door
EXT = Extended Stile(s) FT = Flush Toe SBR = Shaped Bottom Rail LE = Leg Extension TSS = Toe Space Side OS = Omit Shelving
NSH = No Shelf Holes WS = Solid Wood Shelves MI = Matching Interior DT = Dust Top NB = Natural Finished Bottom

V3D/CSB3D - Vanity Three Drawer



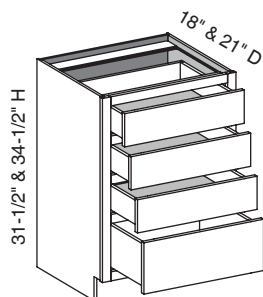
EXP	FL	FUE	SS	PFD	EXT	FT	SBR	LE	TSS	OS	NSH	WS	MI	DT	NB
✓	✓	✓	✓	✓	✓	✓	✓	✓	✓	STD	STD		✓	✓	

Custom Size Ranges
 Width: 12" – 39"
 Height: 31-1/2" – 34-1/2"
 Depth: 12", 15", 18", 21"
 24", 27", 30"

- When height changes, lower opening height changes. Upper and middle opening heights fixed at 5" and 8".

Cabinet Code	
V3D1231.5	V3D1234.5
V3D1531.5	V3D1534.5
V3D1831.5	V3D1834.5
V3D2131.5	V3D2134.5
V3D2431.5	V3D2434.5

V4D/CSB4D - Vanity Four Drawer



EXP	FL	FUE	SS	PFD	EXT	FT	SBR	LE	TSS	OS	NSH	WS	MI	DT	NB
✓	✓	✓	✓	✓	✓	✓	✓	✓	✓	STD	STD		✓	✓	

Custom Size Ranges
 Width: 12" – 39"
 Height: 31-1/2" – 34-1/2"
 Depth: 12", 15", 18", 21"
 24", 27", 30"

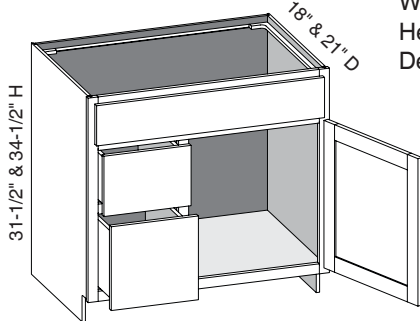
- When height changes, lower opening height changes. Upper opening heights fixed at 5".

Cabinet Code	
V4D1231.5	V4D1234.5
V4D1531.5	V4D1534.5
V4D1831.5	V4D1834.5
V4D2131.5	V4D2134.5
V4D2431.5	V4D2434.5

Options Key: EXP = Exposed End(s) FL = Flush End(s) FUE = Flush Unexposed End(s) SS = Shaped Side PFD = Prep for False Door
 EXT = Extended Stile(s) FT = Flush Toe SBR = Shaped Bottom Rail LE = Leg Extension TSS = Toe Space Side OS = Omit Shelving
 NSH = No Shelf Holes WS = Solid Wood Shelves MI = Matching Interior DT = Dust Top NB = Natural Finished Bottom

VCL/CSVCL - Vanity Combination Left

EXP	FL	FUE	SS	PFD	EXT	FT	SBR	LE	TSS	OS	NSH	WS	MI	DT	NB
✓	✓	✓	✓	✓	✓	✓	✓	✓	✓	STD	STD		✓		



Custom Size Ranges
 Width: 30" – 36"
 Height: 31-1/2" – 34-1/2"
 Depth: 12", 15", 18", 21"
 24", 27", 30"

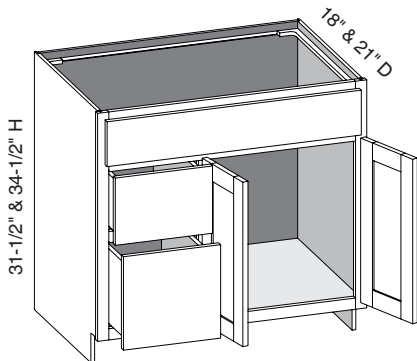
- False top drawer front.
- When height changes, lower opening heights change. Upper and middle opening heights fixed at 5" and 8".
- When width changes, door and false drawer openings change. Lower drawer openings fixed at 12".
- Specify single or butt doors on custom size cabinets 36" wide.
- Doors hinged on center stile require 1/2" overlay hinges for 1-1/4" or 1-3/8" overlays.

Cabinet Code

VCL3031.5	VCL3034.5
VCL3331.5	VCL3334.5
VCL3631.5	VCL3634.5

VCL/CSVCL - Vanity Combination Left w/Butt Doors

EXP	FL	FUE	SS	PFD	EXT	FT	SBR	LE	TSS	OS	NSH	WS	MI	DT	NB
✓	✓	✓	✓	✓	✓	✓	✓	✓	✓	STD	STD		✓		



Custom Size Ranges
 Width: 36" – 48"
 Height: 31-1/2" – 34-1/2"
 Depth: 12", 15", 18", 21"
 24", 27", 30"

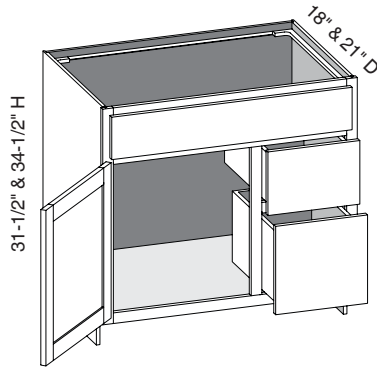
- False top drawer front.
- When height changes, lower opening heights change. Upper and middle opening heights fixed at 5" and 8".
- When width changes, door and false drawer openings change. Lower drawer openings fixed at 12".
- Specify single or butt doors on custom size cabinets 36" wide.
- Doors hinged on center stile require 1/2" overlay hinges for 1-1/4" or 1-3/8" overlays.

Cabinet Code

VCL4231.5BD	VCL4234.5BD
VCL4831.5BD	VCL4834.5BD

Options Key: EXP = Exposed End(s) FL = Flush End(s) FUE = Flush Unexposed End(s) SS = Shaped Side PFD = Prep for False Door
 EXT = Extended Stile(s) FT = Flush Toe SBR = Shaped Bottom Rail LE = Leg Extension TSS = Toe Space Side OS = Omit Shelving
 NSH = No Shelf Holes WS = Solid Wood Shelves MI = Matching Interior DT = Dust Top NB = Natural Finished Bottom

VCR/CSVCR - Vanity Combination Right



EXP	FL	FUE	SS	PFD	EXT	FT	SBR	LE	TSS	OS	NSH	WS	MI	DT	NB
✓	✓	✓	✓	✓	✓	✓	✓	✓	✓	STD	STD		✓		

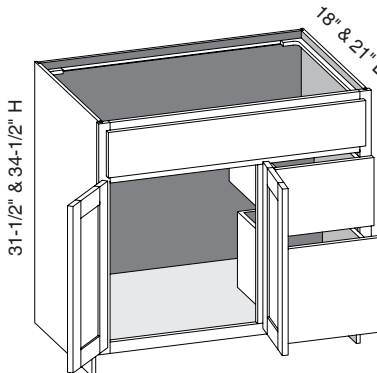
Custom Size Ranges
 Width: 30" – 36"
 Height: 31-1/2" – 34-1/2"
 Depth: 12", 15", 18", 21"
 24", 27", 30"

- False top drawer front.
- When height changes, lower opening heights change. Upper and middle opening heights fixed at 5" and 8".
- When width changes, door and false drawer openings change. Lower drawer openings fixed at 12".
- Specify single or butt doors on custom size cabinets 36" wide.
- Doors hinged on center stile require 1/2" overlay hinges for 1-1/4" or 1-3/8" overlays.

Cabinet Code

VCR3031.5	VCR3034.5
VCR3331.5	VCR3334.5
VCR3631.5	VCR3634.5

VCR/CSVCR - Vanity Combination Right w/Butt Doors



EXP	FL	FUE	SS	PFD	EXT	FT	SBR	LE	TSS	OS	NSH	WS	MI	DT	NB
✓	✓	✓	✓	✓	✓	✓	✓	✓	✓	STD	STD		✓		

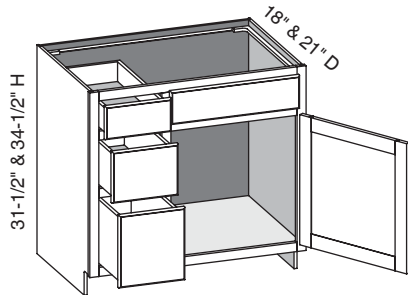
Custom Size Ranges
 Width: 36" – 48"
 Height: 31-1/2" – 34-1/2"
 Depth: 12", 15", 18", 21"
 24", 27", 30"

- False top drawer front.
- When height changes, lower opening heights change. Upper and middle opening heights fixed at 5" and 8".
- When width changes, door and false drawer openings change. Lower drawer openings fixed at 12".
- Specify single or butt doors on custom size cabinets 36" wide.
- Doors hinged on center stile require 1/2" overlay hinges for 1-1/4" or 1-3/8" overlays.

Cabinet Code

VCR4231.5BD	VCR4234.5BD
VCR4831.5BD	VCR4834.5BD

Options Key: EXP = Exposed End(s) FL = Flush End(s) FUE = Flush Unexposed End(s) SS = Shaped Side PFD = Prep for False Door
 EXT = Extended Stile(s) FT = Flush Toe SBR = Shaped Bottom Rail LE = Leg Extension TSS = Toe Space Side OS = Omit Shelving
 NSH = No Shelf Holes WS = Solid Wood Shelves MI = Matching Interior DT = Dust Top NB = Natural Finished Bottom

VC3DL/CSVC3DL - Vanity Combo Three Drawer Left


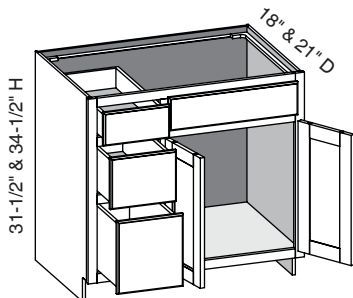
Custom Size Ranges
 Width: 36" – 48"
 Height: 31-1/2" – 34-1/2"
 Depth: 12", 15", 18", 21"
 24", 27", 30"

- When width changes, door and false drawer openings remain fixed.
- Doors hinged on center stile require 1/2" overlay hinges for 1-1/4" or 1-3/8" overlays.

EXP	FL	FUE	SS	PFD	EXT	FT	SBR	LE	TSS	OS	NSH	WS	MI	DT	NB
✓	✓	✓	✓	✓	✓	✓	✓	✓	✓	STD	STD		✓		

Cabinet Code

VC3DL3631.5	VC3DL3634.5
VC3DL3931.5	VC3DL3934.5
VC3DL4231.5	VC3DL4234.5
VC3DL4531.5	VC3DL4534.5
VC3DL4831.5	VC3DL4834.5

VC3DL/CSVC3DL - Vanity Combo Three Drawer Left w/Butt Doors


Custom Size Ranges
 Width: 36" – 48"
 Height: 31-1/2" – 34-1/2"
 Depth: 12", 15", 18", 21"
 24", 27", 30"

- When width changes, door and false drawer openings remain fixed.
- Doors hinged on center stile require 1/2" overlay hinges for 1-1/4" or 1-3/8" overlays.

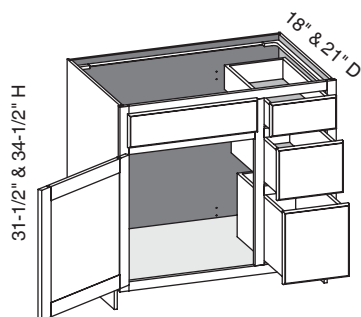
EXP	FL	FUE	SS	PFD	EXT	FT	SBR	LE	TSS	OS	NSH	WS	MI	DT	NB
✓	✓	✓	✓	✓	✓	✓	✓	✓	✓	STD	STD		✓		

Cabinet Code

VC3DL3631.5BD	VC3DL3634.5BD
VC3DL3931.5BD	VC3DL3934.5BD
VC3DL4231.5BD	VC3DL4234.5BD
VC3DL4531.5BD	VC3DL4534.5BD
VC3DL4831.5BD	VC3DL4834.5BD

Options Key: EXP = Exposed End(s) FL = Flush End(s) FUE = Flush Unexposed End(s) SS = Shaped Side PFD = Prep for False Door
 EXT = Extended Stile(s) FT = Flush Toe SBR = Shaped Bottom Rail LE = Leg Extension TSS = Toe Space Side OS = Omit Shelving
 NSH = No Shelf Holes WS = Solid Wood Shelves MI = Matching Interior DT = Dust Top NB = Natural Finished Bottom

VC3DR/CSVC3DR - Vanity Combo Three Drawer Right



EXP	FL	FUE	SS	PFD	EXT	FT	SBR	LE	TSS	OS	NSH	WS	MI	DT	NB
✓	✓	✓	✓	✓	✓	✓	✓	✓	✓	STD	STD		✓		

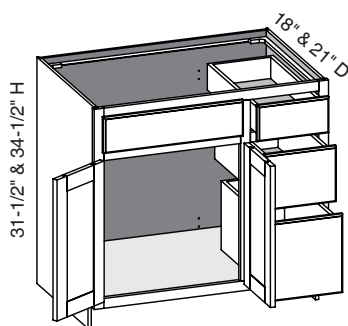
Custom Size Ranges
Width: 36" – 48"
Height: 31-1/2" – 34-1/2"
Depth: 12", 15", 18", 21"
24", 27", 30"

- When width changes, door and false drawer openings remain fixed.
- When height changes, lower opening heights change. Upper and middle opening heights fixed at 5" and 8".
- Doors hinged on center stile require 1/2" overlay hinges for 1-1/4" or 1-3/8" overlays.

Cabinet Code

VC3DR3631.5	VC3DR3634.5
VC3DR3931.5	VC3DR3934.5
VC3DR4231.5	VC3DR4234.5
VC3DR4531.5	VC3DR4534.5
VC3DR4831.5	VC3DR4834.5

VC3DR/CSVC3DR - Vanity Combo Three Drawer Right w/Butt Doors



EXP	FL	FUE	SS	PFD	EXT	FT	SBR	LE	TSS	OS	NSH	WS	MI	DT	NB
✓	✓	✓	✓	✓	✓	✓	✓	✓	✓	STD	STD		✓		

Custom Size Ranges
Width: 36" – 48"
Height: 31-1/2" – 34-1/2"
Depth: 12", 15", 18", 21"
24", 27", 30"

- When width changes, door and false drawer openings remain fixed.
- When height changes, lower opening heights change. Upper and middle opening heights fixed at 5" and 8".
- Doors hinged on center stile require 1/2" overlay hinges for 1-1/4" or 1-3/8" overlays.

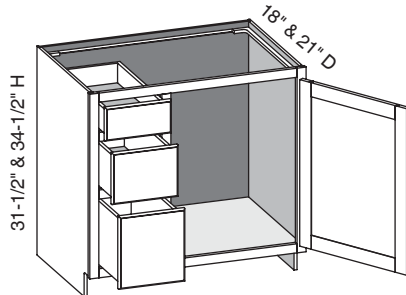
Cabinet Code

VC3DR3631.5BD	VC3DR3634.5BD
VC3DR3931.5BD	VC3DR3934.5BD
VC3DR4231.5BD	VC3DR4234.5BD
VC3DR4531.5BD	VC3DR4534.5BD
VC3DR4831.5BD	VC3DR4834.5BD

Options Key: EXP = Exposed End(s) FL = Flush End(s) FUE = Flush Unexposed End(s) SS = Shaped Side PFD = Prep for False Door
EXT = Extended Stile(s) FT = Flush Toe SBR = Shaped Bottom Rail LE = Leg Extension TSS = Toe Space Side OS = Omit Shelving
NSH = No Shelf Holes WS = Solid Wood Shelves MI = Matching Interior DT = Dust Top NB = Natural Finished Bottom

VCFD3DL/CSVCFD3DL - Vanity Combo Full Door Three Drawer Left

EXP	FL	FUE	SS	PFD	EXT	FT	SBR	LE	TSS	OS	NSH	WS	MI	DT	NB
✓	✓	✓	✓	✓	✓	✓	✓	✓	✓	STD	STD		✓		



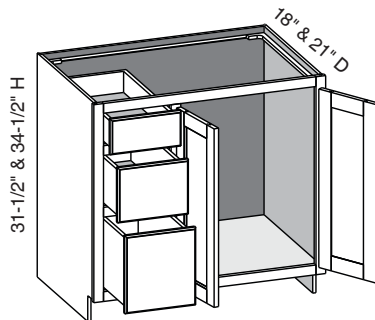
Custom Size Ranges
 Width: 36" – 48"
 Height: 31-1/2" – 34-1/2"
 Depth: 12", 15", 18", 21"
 24", 27", 30"

- When width changes, door opening remains fixed.
- When height changes, lower opening heights change. Upper and middle drawer opening heights fixed at 5" and 8".
- Doors hinged on center stile require 1/2" overlay hinges for 1-1/4" or 1-3/8" overlays.

Cabinet Code	
VCFD3DL3631.5	VCFD3DL3634.5
VCFD3DL3931.5	VCFD3DL3934.5
VCFD3DL4231.5	VCFD3DL4234.5
VCFD3DL4531.5	VCFD3DL4534.5
VCFD3DL4831.5	VCFD3DL4834.5

VCFD3DL/CSVCFD3DL - Vanity Combo Full Door Three Drawers Left w/Butt Doors

EXP	FL	FUE	SS	PFD	EXT	FT	SBR	LE	TSS	OS	NSH	WS	MI	DT	NB
✓	✓	✓	✓	✓	✓	✓	✓	✓	✓	STD	STD		✓		



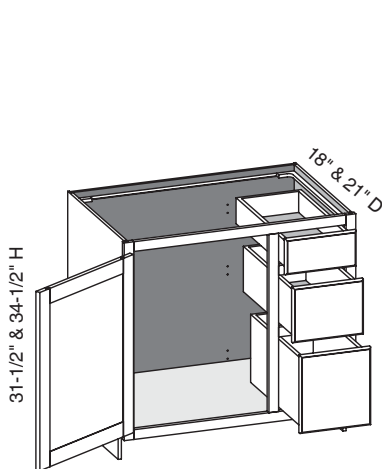
Custom Size Ranges
 Width: 36" – 48"
 Height: 31-1/2" – 34-1/2"
 Depth: 12", 15", 18", 21"
 24", 27", 30"

- When width changes, door opening remains fixed.
- When height changes, lower opening heights change. Upper and middle drawer opening heights fixed at 5" and 8".
- Doors hinged on center stile require 1/2" overlay hinges for 1-1/4" or 1-3/8" overlays.

Cabinet Code	
VCFD3DL3631.5BD	VCFD3DL3634.5BD
VCFD3DL3931.5BD	VCFD3DL3934.5BD
VCFD3DL4231.5BD	VCFD3DL4234.5BD
VCFD3DL4531.5BD	VCFD3DL4534.5BD
VCFD3DL4831.5BD	VCFD3DL4834.5BD

Options Key: EXP = Exposed End(s) FL = Flush End(s) FUE = Flush Unexposed End(s) SS = Shaped Side PFD = Prep for False Door
 EXT = Extended Stile(s) FT = Flush Toe SBR = Shaped Bottom Rail LE = Leg Extension TSS = Toe Space Side OS = Omit Shelving
 NSH = No Shelf Holes WS = Solid Wood Shelves MI = Matching Interior DT = Dust Top NB = Natural Finished Bottom

VCFD3DR/CSVCFD3DR - Vanity Combo Full Door Three Drawer Right



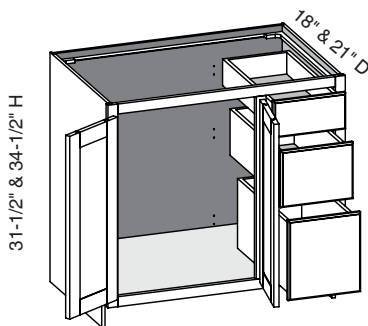
EXP	FL	FUE	SS	PFD	EXT	FT	SBR	LE	TSS	OS	NSH	WS	MI	DT	NB
✓	✓	✓	✓	✓	✓	✓	✓	✓	✓	STD	STD		✓		

Custom Size Ranges
 Width: 36" – 48"
 Height: 31-1/2" – 34-1/2"
 Depth: 12", 15", 18", 21"
 24", 27", 30"

- When width changes, door opening remains fixed.
- When height changes, lower opening heights change. Upper and middle drawer opening heights fixed at 5" and 8".
- Doors hinged on center stile require 1/2" overlay hinges for 1-1/4" or 1-3/8" overlays.

Cabinet Code	
VCFD3DR3631.5	VCFD3DR3634.5
VCFD3DR3931.5	VCFD3DR3934.5
VCFD3DR4231.5	VCFD3DR4234.5
VCFD3DR4531.5	VCFD3DR4534.5
VCFD3DR4831.5	VCFD3DR4834.5

VCFD3DR/CSVCFD3DR - Vanity Combo Full Door Three Drawers Right w/Butt Doors



EXP	FL	FUE	SS	PFD	EXT	FT	SBR	LE	TSS	OS	NSH	WS	MI	DT	NB
✓	✓	✓	✓	✓	✓	✓	✓	✓	✓	STD	STD		✓		

Custom Size Ranges
 Width: 36" – 48"
 Height: 31-1/2" – 34-1/2"
 Depth: 12", 15", 18", 21"
 24", 27", 30"

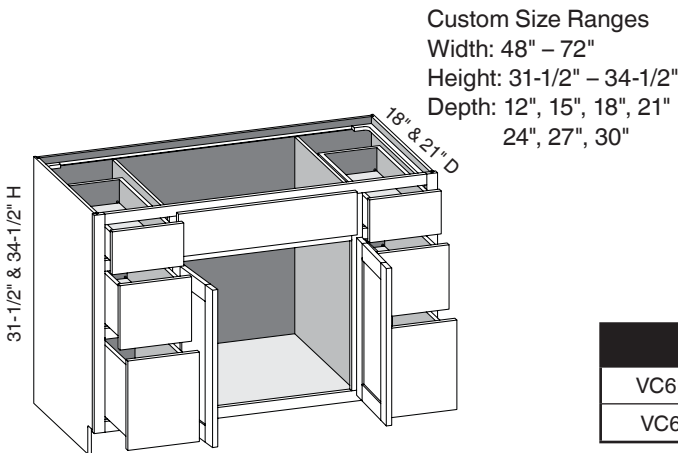
- When width changes, door opening remains fixed.
- When height changes, lower opening heights change. Upper and middle drawer opening heights fixed at 5" and 8".
- Doors hinged on center stile require 1/2" overlay hinges for 1-1/4" or 1-3/8" overlays.

Cabinet Code	
VCFD3DR3631.5BD	VCFD3DR3634.5BD
VCFD3DR3931.5BD	VCFD3DR3934.5BD
VCFD3DR4231.5BD	VCFD3DR4234.5BD
VCFD3DR4531.5BD	VCFD3DR4534.5BD
VCFD3DR4831.5BD	VCFD3DR4834.5BD

Options Key: EXP = Exposed End(s) FL = Flush End(s) FUE = Flush Unexposed End(s) SS = Shaped Side PFD = Prep for False Door
 EXT = Extended Stile(s) FT = Flush Toe SBR = Shaped Bottom Rail LE = Leg Extension TSS = Toe Space Side OS = Omit Shelving
 NSH = No Shelf Holes WS = Solid Wood Shelves MI = Matching Interior DT = Dust Top NB = Natural Finished Bottom

VC6D/CSVC6D - Vanity Combination Six Drawer w/Butt Doors

EXP	FL	FUE	SS	PFD	EXT	FT	SBR	LE	TSS	OS	NSH	WS	MI	DT	NB
✓	✓	✓	✓	✓	✓	✓	✓		✓	STD	STD		✓		



Custom Size Ranges
 Width: 48" – 72"
 Height: 31-1/2" – 34-1/2"
 Depth: 12", 15", 18", 21"
 24", 27", 30"

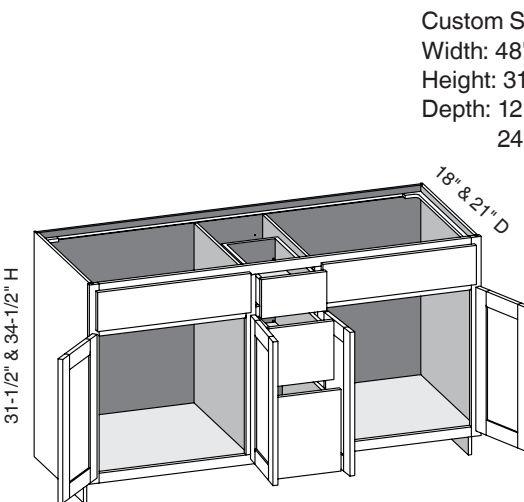
- One false top drawer front, two functional top drawers.
- When height changes, lower opening heights change. Upper and middle drawer openings heights fixed at 5" and 8".
- When width changes, door and false drawer front openings change.
- Doors hinged on center stile require 1/2" overlay hinges for 1-1/4" or 1-3/8" overlays.

Cabinet Code

VC6D4831.5BD	VC6D4834.5BD
VC6D6031.5BD	VC6D6034.5BD

VC3D/CSVC3D - Vanity Combination Three Drawer w/Butt Doors

EXP	FL	FUE	SS	PFD	EXT	FT	SBR	LE	TSS	OS	NSH	WS	MI	DT	NB
✓	✓	✓	✓	✓	✓	✓	✓	✓	✓	STD	STD		✓		



Custom Size Ranges
 Width: 48" – 72"
 Height: 31-1/2" – 34-1/2"
 Depth: 12", 15", 18", 21"
 24", 27", 30"

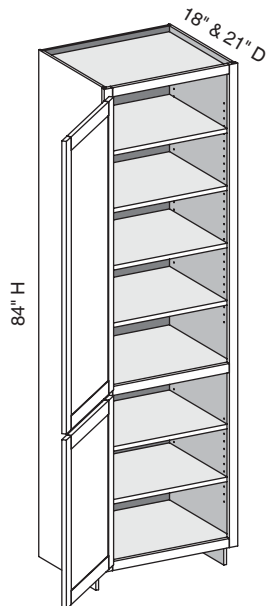
- Two false top drawer fronts, one functional top drawer.
- When height changes, lower opening heights change. Upper and middle drawer openings heights fixed at 5" and 8".
- When width changes, door and false drawer front openings change.
- Doors hinged on center stile require 1/2" overlay hinges for 1-1/4" or 1-3/8" overlays.

Cabinet Code

VC3D6031.5BD	VC3D6034.5BD
--------------	--------------

Options Key: EXP = Exposed End(s) FL = Flush End(s) FUE = Flush Unexposed End(s) SS = Shaped Side PFD = Prep for False Door
 EXT = Extended Stile(s) FT = Flush Toe SBR = Shaped Bottom Rail LE = Leg Extension TSS = Toe Space Side OS = Omit Shelving
 NSH = No Shelf Holes WS = Solid Wood Shelves MI = Matching Interior DT = Dust Top NB = Natural Finished Bottom

VLV/CSVLV - Vanity Linen Vanity Height



EXP	FL	FUE	SS	PFD	EXT	FT	SBR	LE	TSS	OS	NSH	WS	MI	DT	NB
✓	✓	✓	✓	✓	✓	✓	✓	✓		✓	✓	✓	✓		

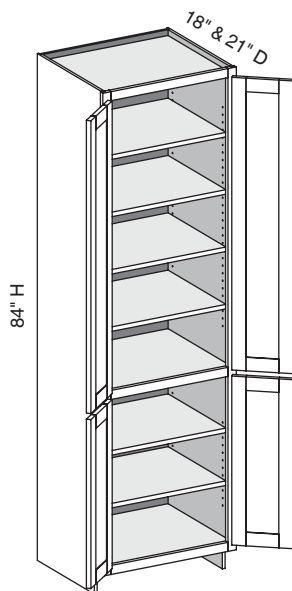
Custom Size Ranges
Width: 12" – 24"
Height: 84" – 120"
Depth: 5-1/2" – 30"

- Lower section aligns with 31-1/2" high vanity cabinets.
- 84" – 90" high has six shelves.
- 90-1/16" – 96" high has seven shelves.
- 96-1/16" – 108" high has eight shelves.
- 108-1/16" – 120" high has nine shelves.
- Matching specie interior is not available over 96" high. Natural Birch UV material will be used.
- When height changes, upper opening height changes. Lower opening height fixed at 24-1/2".
- Specify single or butt doors on custom size cabinets 24" wide.
- Separate 4" high toe platform is available with all cabinet heights.

Cabinet Code

VLV1884	VLV2484
VLV2184	

VLV/CSVLV - Vanity Linen Vanity Height w/Butt Doors



EXP	FL	FUE	SS	PFD	EXT	FT	SBR	LE	TSS	OS	NSH	WS	MI	DT	NB
✓	✓	✓	✓	✓	✓	✓	✓	✓		✓	✓	✓	✓		

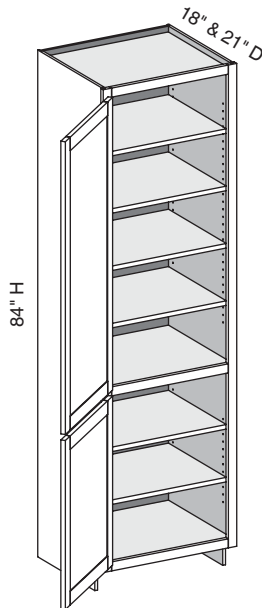
Custom Size Ranges
Width: 24" – 36"
Height: 84" – 120"
Depth: 5-1/2" – 30"

- Lower section aligns with 31-1/2" high vanity cabinets.
- 84" – 90" high has six shelves.
- 90-1/16" – 96" high has seven shelves.
- 96-1/16" – 108" high has eight shelves.
- 108-1/16" – 120" high has nine shelves.
- Matching specie interior is not available over 96" high. Natural Birch UV material will be used.
- When height changes, upper opening height changes. Lower opening height fixed at 24-1/2".
- Specify single or butt doors on custom size cabinets 24" wide.
- Separate 4" high toe platform is available with all cabinet heights.

Cabinet Code

VLV2484BD

Options Key: EXP = Exposed End(s) FL = Flush End(s) FUE = Flush Unexposed End(s) SS = Shaped Side PFD = Prep for False Door
EXT = Extended Stile(s) FT = Flush Toe SBR = Shaped Bottom Rail LE = Leg Extension TSS = Toe Space Side OS = Omit Shelving
NSH = No Shelf Holes WS = Solid Wood Shelves MI = Matching Interior DT = Dust Top NB = Natural Finished Bottom

VLB/CSUCR - Vanity Linen Base Height


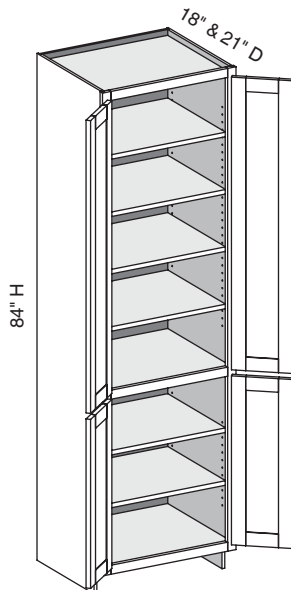
EXP	FL	FUE	SS	PFD	EXT	FT	SBR	LE	TSS	OS	NSH	WS	MI	DT	NB
✓	✓	✓	✓	✓	✓	✓	✓	✓	✓	✓	✓	✓	✓		

Custom Size Ranges
 Width: 12" – 24"
 Height: 84" – 120"
 Depth: 5-1/2" – 30"

- Lower section aligns with 34-1/2" high vanity cabinets.
- 84" – 90" high has six shelves.
- 90-1/16" – 96" high has seven shelves.
- 96-1/16" – 108" high has eight shelves.
- 108-1/16" – 120" high has nine shelves.
- Matching specie interior is not available over 96" high. Natural Birch UV material will be used.
- When height changes, upper opening height changes. Lower opening height fixed at 27-1/2".
- Specify single or butt doors on custom size cabinets 24" wide.
- Separate 4" high toe platform is available with all cabinet heights.

Cabinet Code

VLB1884	VLB2484
VLB2184	

VLB/CSUCR - Vanity Linen Base Height w/Butt Doors


EXP	FL	FUE	SS	PFD	EXT	FT	SBR	LE	TSS	OS	NSH	WS	MI	DT	NB
✓	✓	✓	✓	✓	✓	✓	✓	✓	✓	✓	✓	✓	✓		

Custom Size Ranges
 Width: 24" – 36"
 Height: 84" – 120"
 Depth: 5-1/2" – 30"

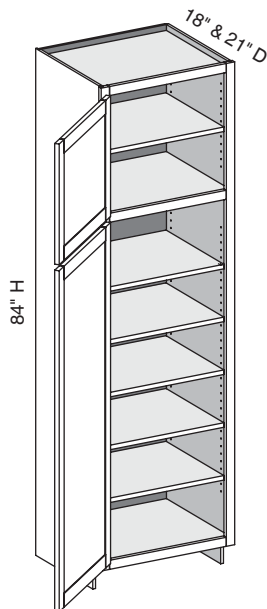
- Lower section aligns with 34-1/2" high vanity cabinets.
- 84" – 90" high has six shelves.
- 90-1/16" – 96" high has seven shelves.
- 96-1/16" – 108" high has eight shelves.
- 108-1/16" – 120" high has nine shelves.
- Matching specie interior is not available over 96" high. Natural Birch UV material will be used.
- When height changes, upper opening height changes. Lower opening height fixed at 27-1/2".
- Specify single or butt doors on custom size cabinets 24" wide.
- Separate 4" high toe platform is available with all cabinet heights.

Cabinet Code

VLB2484BD

Options Key: EXP = Exposed End(s) FL = Flush End(s) FUE = Flush Unexposed End(s) SS = Shaped Side PFD = Prep for False Door
 EXT = Extended Stile(s) FT = Flush Toe SBR = Shaped Bottom Rail LE = Leg Extension TSS = Toe Space Side OS = Omit Shelving
 NSH = No Shelf Holes WS = Solid Wood Shelves MI = Matching Interior DT = Dust Top NB = Natural Finished Bottom

VUC/CSUC - Vanity Utility



EXP	FL	FUE	SS	PFD	EXT	FT	SBR	LE	TSS	OS	NSH	WS	MI	DT	NB
✓	✓	✓	✓	✓	✓	✓	✓	✓	✓	✓	✓	✓	✓		

Custom Size Ranges

Width: 12" – 24"

Height: 84" – 120"

Depth: 5-1/2" – 30"

- 84" – 90" high has six shelves.
- 90-1/16" – 96" high has seven shelves.
- 96-1/16" – 108" high has eight shelves.
- 108-1/16" – 120" high has nine shelves.
- Matching specie interior is not available over 96" high. Natural Birch UV material will be used.
- When height changes, upper opening height changes. Lower opening height fixed at 56".
- Specify single or butt doors on custom size cabinets 24" wide.
- Separate 4" high toe platform is available with all cabinet heights.

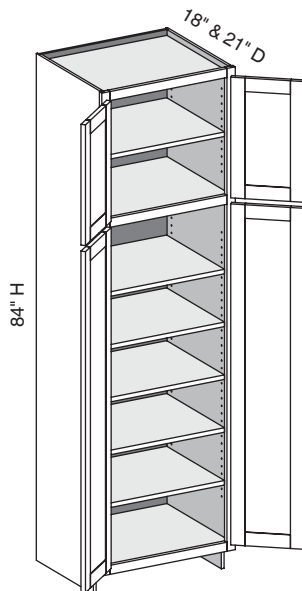
Cabinet Code

VUC1884

VUC2484

VUC2184

VUC/CSUC - Vanity Utility w/Butt Doors



EXP	FL	FUE	SS	PFD	EXT	FT	SBR	LE	TSS	OS	NSH	WS	MI	DT	NB
✓	✓	✓	✓	✓	✓	✓	✓	✓	✓	✓	✓	✓	✓		

Custom Size Ranges

Width: 24" – 36"

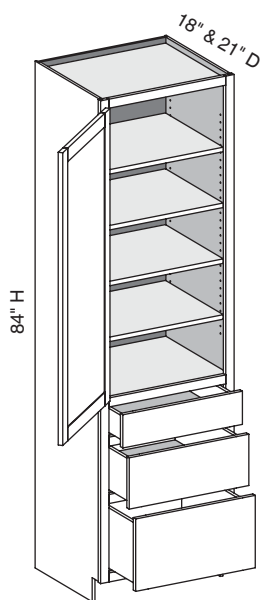
Height: 84" – 120"

Depth: 5-1/2" – 30"

- 84" – 90" high has six shelves.
- 90-1/16" – 96" high has seven shelves.
- 96-1/16" – 108" high has eight shelves.
- 108-1/16" – 120" high has nine shelves.
- Matching specie interior is not available over 96" high. Natural Birch UV material will be used.
- When height changes, upper opening height changes. Lower opening height fixed at 56".
- Specify single or butt doors on custom size cabinets 24" wide.
- Separate 4" high toe platform is available with all cabinet heights.

Cabinet Code

VUC2484BD

VL3V/CSVL3V - Vanity Linen Three Drawer Vanity Height


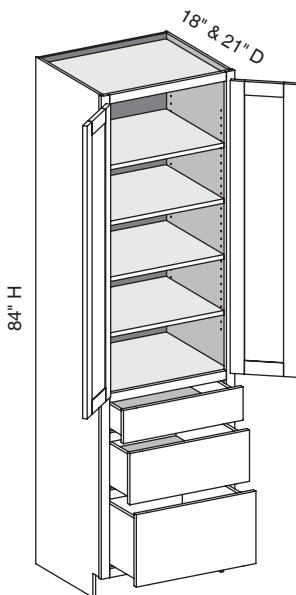
EXP	FL	FUE	SS	PFD	EXT	FT	SBR	LE	TSS	OS	NSH	WS	MI	DT	NB
✓	✓	✓	✓	✓	✓	✓	✓	✓	✓	✓	✓	✓	✓		

Custom Size Ranges
 Width: 12" – 24"
 Height: 84" – 120"
 Depth: 12", 15", 18", 21"
 24", 27", 30"

- Lower section aligns with 31-1/2" high vanity cabinets.
- 84" – 90" high has four shelves.
- 90-1/16" – 96" high has five shelves.
- 96-1/16" – 108" high has six shelves.
- 108-1/16" – 120" high has seven shelves.
- Matching specie interior is not available over 96" high. Natural Birch UV material will be used.
- When height changes, upper opening height changes. Lower drawer opening heights fixed at 5", 8" and 8-1/2".
- Specify single or butt doors on custom size cabinets 24" wide.
- Separate 4" high toe platform is available with all cabinet heights.

Cabinet Code

VL3V1884	VL3V2484
VL3V2184	

VL3V/CSVL3V - Vanity Linen Three Drawer Vanity Height w/Butt Doors


EXP	FL	FUE	SS	PFD	EXT	FT	SBR	LE	TSS	OS	NSH	WS	MI	DT	NB
✓	✓	✓	✓	✓	✓	✓	✓	✓	✓	✓	✓	✓	✓		

Custom Size Ranges
 Width: 24" – 36"
 Height: 84" – 120"
 Depth: 12", 15", 18", 21"
 24", 27", 30"

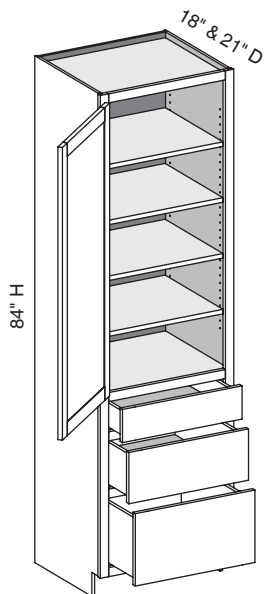
- Lower section aligns with 31-1/2" high vanity cabinets.
- 84" – 90" high has four shelves.
- 90-1/16" – 96" high has five shelves.
- 96-1/16" – 108" high has six shelves.
- 108-1/16" – 120" high has seven shelves.
- Matching specie interior is not available over 96" high. Natural Birch UV material will be used.
- When height changes, upper opening height changes. Lower drawer opening heights fixed at 5", 8" and 8-1/2".
- Specify single or butt doors on custom size cabinets 24" wide.
- Separate 4" high toe platform is available with all cabinet heights.

Cabinet Code

VL3V2484BD

Options Key: EXP = Exposed End(s) FL = Flush End(s) FUE = Flush Unexposed End(s) SS = Shaped Side PFD = Prep for False Door
 EXT = Extended Stile(s) FT = Flush Toe SBR = Shaped Bottom Rail LE = Leg Extension TSS = Toe Space Side OS = Omit Shelving
 NSH = No Shelf Holes WS = Solid Wood Shelves MI = Matching Interior DT = Dust Top NB = Natural Finished Bottom

VL3B/CSU3D - Vanity Linen Three Drawer Base Height



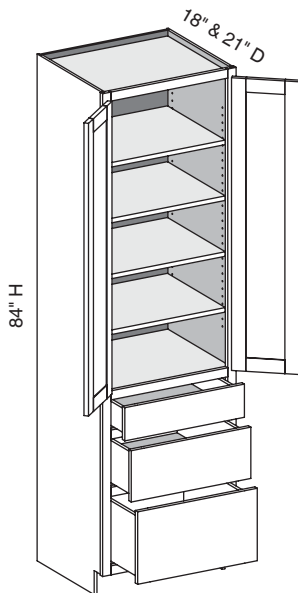
EXP	FL	FUE	SS	PFD	EXT	FT	SBR	LE	TSS	OS	NSH	WS	MI	DT	NB
✓	✓	✓	✓	✓	✓	✓	✓	✓	✓	✓	✓	✓	✓		

Custom Size Ranges
Width: 12" – 24"
Height: 84" – 120"
Depth: 12", 15", 18", 21"
24", 27", 30"

- Lower section aligns with 34-1/2" high vanity cabinets.
- 84" – 90" high has four shelves.
- 90-1/16" – 96" high has five shelves.
- 96-1/16" – 108" high has six shelves.
- 108-1/16" – 120" high has seven shelves.
- Matching specie interior is not available over 96" high. Natural Birch UV material will be used.
- When height changes, upper opening height changes. Lower drawer opening heights fixed at 5", 8" and 11-1/2".
- Specify single or butt doors on custom size cabinets 24" wide.
- Separate 4" high toe platform is available with all cabinet heights.

Cabinet Code	
VL3B1884	VL3B2484
VL3B2184	

VL3B/CSU3D - Vanity Linen Three Drawer Base Height w/Butt Doors



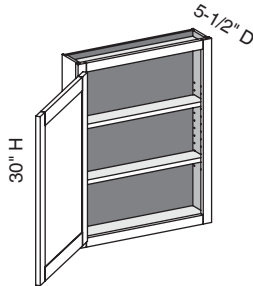
EXP	FL	FUE	SS	PFD	EXT	FT	SBR	LE	TSS	OS	NSH	WS	MI	DT	NB
✓	✓	✓	✓	✓	✓	✓	✓	✓	✓	✓	✓	✓	✓		

Custom Size Ranges
Width: 24" – 36"
Height: 84" – 120"
Depth: 12", 15", 18", 21"
24", 27", 30"

- Lower section aligns with 34-1/2" high vanity cabinets.
- 84" – 90" high has four shelves.
- 90-1/16" – 96" high has five shelves.
- 96-1/16" – 108" high has six shelves.
- 108-1/16" – 120" high has seven shelves.
- Matching specie interior is not available over 96" high. Natural Birch UV material will be used.
- When height changes, upper opening height changes. Lower drawer opening heights fixed at 5", 8" and 11-1/2".
- Specify single or butt doors on custom size cabinets 24" wide.
- Separate 4" high toe platform is available with all cabinet heights.

Cabinet Code
VL3B2484BD

Options Key: EXP = Exposed End(s) FL = Flush End(s) FUE = Flush Unexposed End(s) SS = Shaped Side PFD = Prep for False Door
EXT = Extended Stile(s) FT = Flush Toe SBR = Shaped Bottom Rail LE = Leg Extension TSS = Toe Space Side OS = Omit Shelving
NSH = No Shelf Holes WS = Solid Wood Shelves MI = Matching Interior DT = Dust Top NB = Natural Finished Bottom

VW/CSW - Vanity Wall


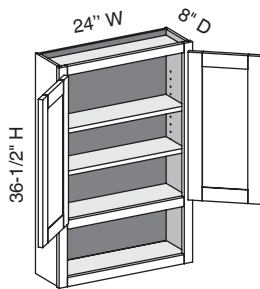
EXP	FL	FUE	SS	PFD	EXT	FT	SBR	LE	TSS	OS	NSH	WS	MI	DT	NB
✓	✓	✓		✓	✓					✓	✓	✓	✓		✓

Custom Size Ranges
 Width: 9" – 36"
 Height: 12" – 48"
 Depth: 5-1/2" – 30"

- 12" – 18" high has no shelves.
- 18-1/16" – 24" high has one shelf.
- 24-1/16" – 36" high has two shelves.
- 36-1/16" – 48" high has three shelves.
- Specify single or butt doors on custom size cabinets 24" wide.

30" High

VW1230	VW1830
VW1530	VW2430

VWS/CSVWS - Vanity Wall Shelf w/Butt Doors


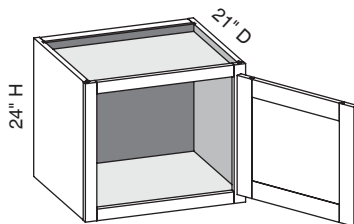
EXP	FL	FUE	SS	PFD	EXT	FT	SBR	LE	TSS	OS	NSH	WS	MI	DT	NB
✓	✓	✓		✓	✓					✓	✓	✓	✓		✓

Custom Size Ranges
 Width: 24" – 36"
 Height: 24" – 48"
 Depth: 5-1/2" – 12-1/2"

- 8" high bottom opening – fixed.
- Lower section does not match exterior specie unless matching interior is ordered.

36" High

VWS2436.5BD

WHV/CSWHV - Wall Hung Vanity


EXP	FL	FUE	SS	PFD	EXT	FT	SBR	LE	TSS	OS	NSH	WS	MI	DT	NB
✓	✓	✓		✓	✓					STD	STD		✓	STD	✓

Custom Size Ranges
 Width: 21" – 24"
 Height: 18" – 24"
 Depth: 18" – 21"

- Includes two precut 2 x 4 installation cleats.
- The load capacity of these cabinets is greatly dependent on the quality of the installation screws and whether the cabinets are secured into the wall studs. If not secured into two or more studs, using high quality installation screws the cabinet may not support the desired weight.
- Conestoga will not be responsible for cabinet failure due to inadequate installation techniques or materials.

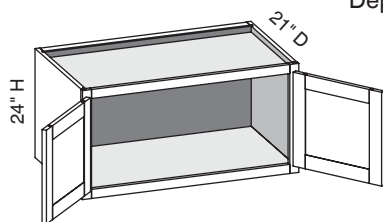
24" High

WHV2124
WHV2424

Options Key: EXP = Exposed End(s) FL = Flush End(s) FUE = Flush Unexposed End(s) SS = Shaped Side PFD = Prep for False Door
 EXT = Extended Stile(s) FT = Flush Toe SBR = Shaped Bottom Rail LE = Leg Extension TSS = Toe Space Side OS = Omit Shelving
 NSH = No Shelf Holes WS = Solid Wood Shelves MI = Matching Interior DT = Dust Top NB = Natural Finished Bottom

WHV/CSWHV - Wall Hung Vanity w/Butt Doors

EXP	FL	FUE	SS	PFD	EXT	FT	SBR	LE	TSS	OS	NSH	WS	MI	DT	NB
✓	✓	✓		✓	✓					STD	STD		✓	STD	✓



Custom Size Ranges
 Width: 24" – 36"
 Height: 18" – 24"
 Depth: 18" – 21"

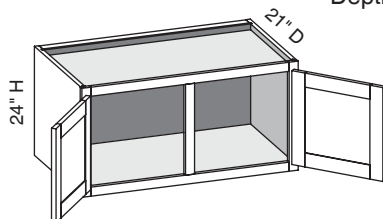
- Includes two precut 2 x 4 installation cleats.
- The load capacity of these cabinets is greatly dependent on the quality of the installation screws and whether the cabinets are secured into the wall studs. If not secured into two or more studs, using high quality installation screws the cabinet may not support the desired weight.
- Conestoga will not be responsible for cabinet failure due to inadequate installation techniques or materials.

24" High

WHV2424BD	WHV3324BD
WHV2724BD	WHV3624BD
WHV3024BD	

WHV/CSWHVCS - Wall Hung Vanity w/Center Stile

EXP	FL	FUE	SS	PFD	EXT	FT	SBR	LE	TSS	OS	NSH	WS	MI	DT	NB
✓	✓	✓		✓	✓					STD	STD		✓	STD	✓



Custom Size Ranges
 Width: 27" – 48"
 Height: 18" – 24"
 Depth: 18" – 21"

- Includes two precut 2 x 4 installation cleats.
- The load capacity of these cabinets is greatly dependent on the quality of the installation screws and whether the cabinets are secured into the wall studs. If not secured into two or more studs, using high quality installation screws the cabinet may not support the desired weight.
- Conestoga will not be responsible for cabinet failure due to inadequate installation techniques or materials.

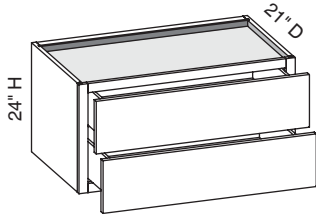
24" High

WHV2724	WHV3924
WHV3024	WHV4224
WHV3324	WHV4524
WHV3624	WHV4824

Options Key: EXP = Exposed End(s) FL = Flush End(s) FUE = Flush Unexposed End(s) SS = Shaped Side PFD = Prep for False Door
 EXT = Extended Stile(s) FT = Flush Toe SBR = Shaped Bottom Rail LE = Leg Extension TSS = Toe Space Side OS = Omit Shelving
 NSH = No Shelf Holes WS = Solid Wood Shelves MI = Matching Interior DT = Dust Top NB = Natural Finished Bottom

WHV2D/CSWHV2D - Wall Hung Vanity Two Drawers

EXP	FL	FUE	SS	PFD	EXT	FT	SBR	LE	TSS	OS	NSH	WS	MI	DT	NB
✓	✓	✓		✓	✓					STD	STD		✓	STD	✓



Custom Size
Ranges
Width: 21" – 36"
Height: 18" – 24"
Depth: 18", 21"

- Drawer boxes are 6" less than the depth of the cabinet to accomodate inset drawers and hardware.
- Includes two precut 2 x 4 installation cleats.
- The load capacity of these cabinets is greatly dependent on the quality of the installation screws and whether the cabinets are secured into the wall studs. If not secured into two or more studs, using high quality installation screws the cabinet may not support the desired weight.
- Conestoga will not be responsible for cabinet failure due to inadequate installation techniques or materials.

24" High	
WHV2D2124	WHV2D3024
WHV2D2424	WHV2D3324
WHV2D2724	WHV2D3624

Options Key: **EXP** = Exposed End(s) **FL** = Flush End(s) **FUE** = Flush Unexposed End(s) **SS** = Shaped Side **PFD** = Prep for False Door
EXT = Extended Stile(s) **FT** = Flush Toe **SBR** = Shaped Bottom Rail **LE** = Leg Extension **TSS** = Toe Space Side **OS** = Omit Shelving
NSH = No Shelf Holes **WS** = Solid Wood Shelves **MI** = Matching Interior **DT** = Dust Top **NB** = Natural Finished Bottom