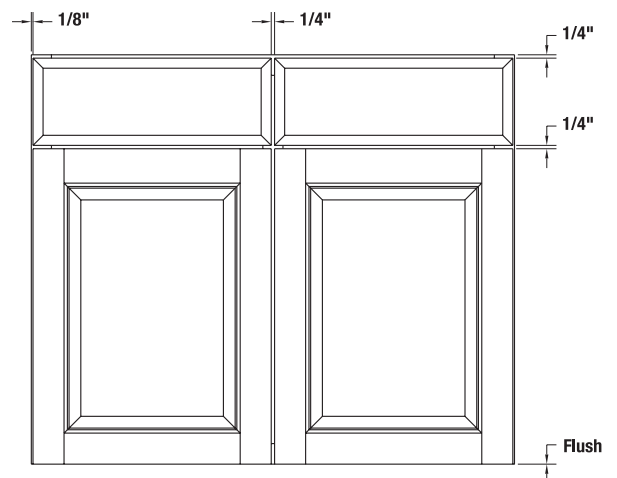
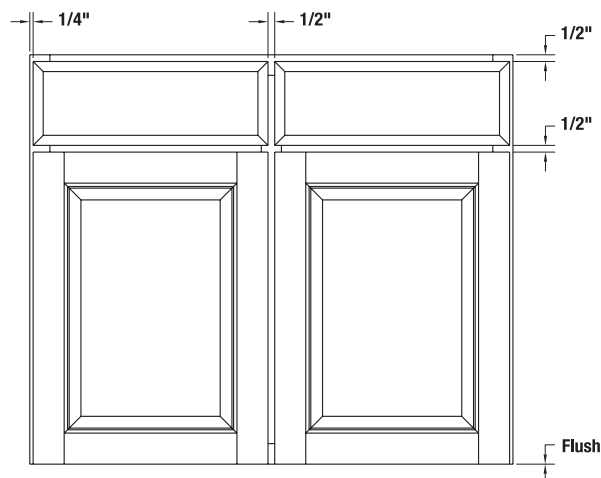
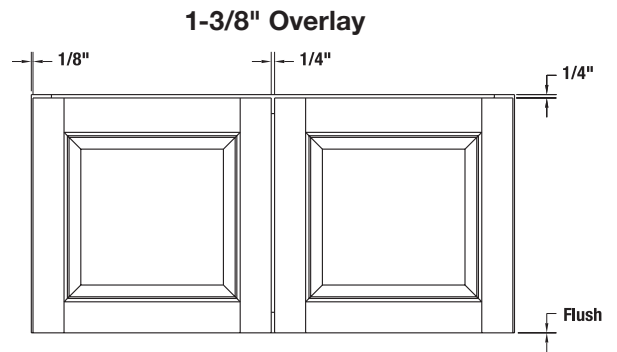
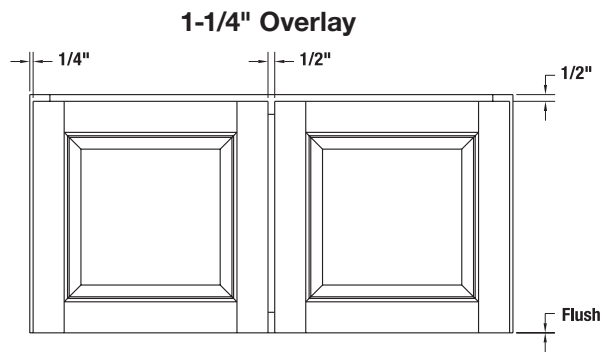
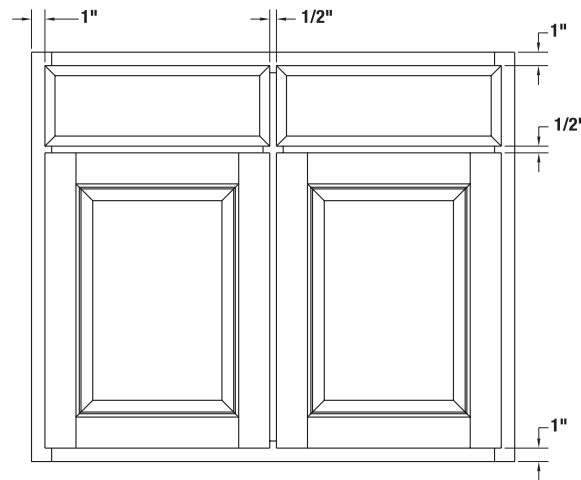
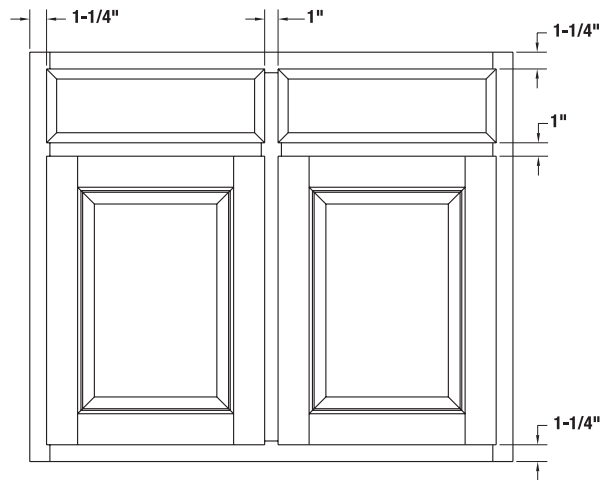
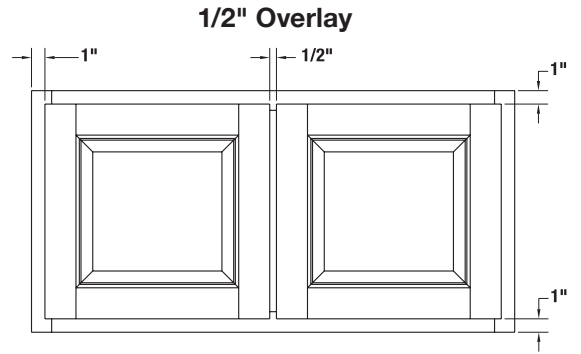
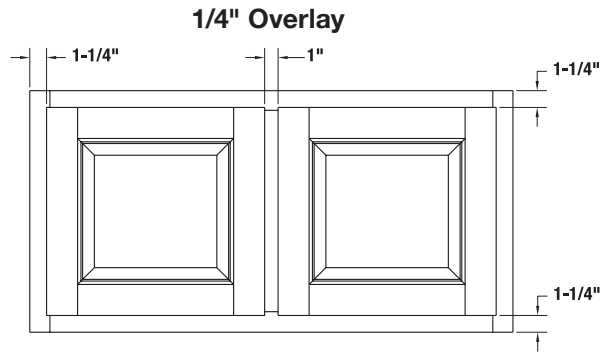


Overlay Diagrams (w/center stile)



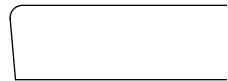
Inset Door and Drawer Information

- Front frames ordered with inset doors and drawer fronts will be pre-fit to the opening size. A 3/32" margin will be used on all sides for single doors and drawer fronts and between butt door pairs.
- Inset doors and drawer fronts are not subject to Program door pricing and will be priced as Custom doors.
- The following edge profile options are recommended for use with inset doors and drawer fronts. These edges have a 5 degree back bevel edge to ensure sufficient door clearance. Machine Edge is available upon request at no additional upcharge.

Standard Lip Options



L-253



L-686

Design Exceptions

- The following door and drawer front styles are not available for inset applications due to their unique design characteristics: Aspen, Astoria, Aurora, Boulder, Brighton, CRP-1420, CRP-10191, CRP-10318, CRP-10334, CRP-10827, CRP-10875, CRP-10946, Fairhaven, Fargo, Flush Batten, Hastings, LaSalle, Omaha, Prestige, Radcliffe, Rothbury, Rothsford, Savoy, Summit, Topeka, TW-10827, TW-10875, Wellston and Woodridge.
- The following standard edge profile options are available for inset applications: L-253 and L-686. Premium edge profiles: L-304 and L-996 upcharge applies.
- Front frame openings with trimmable inserts are not available beaded.
- Inset and beaded front frames that are ordered with Colourtones and glazes will receive the same hand glazed finishes as doors. Case parts will not receive a hand wiped glaze. Cabinet Systems parts that are ordered with select Colourtone and glaze combinations will be finished with Colourtones that have been tinted to match one of the select Colourtone and glaze combination*. Some options, such as Heirloom and Brushed glazes that are available on inset and beaded front frames are not available on Cabinet Systems case parts.
- **Miter/Inset Combination Not Recommended.** Miter doors and drawer fronts are not recommended for inset applications for the following reasons:
 - ♦ **Miter joint lines may not intersect door corner after pre-fit sanding.** Not considered a defect by Conestoga, this condition may not be visually pleasing to some customers.
 - ♦ **Panel expansion caused by high humidity may cause miter doors to bind inside frame openings.** Although Conestoga's miter door joint construction is one of the industry's most durable, high humidity will cause panel expansion. The resulting pressure can push the mitered door framing outward and bind against the front frame.
 - ♦ If a miter design is necessary, Conestoga recommends specifying a plywood or MDF center panel. To reduce expansion see applicable specifications in the Custom Products Manual.
 - ♦ For complete inset and beaded front frame information see the Specialty Products Section in the Custom Product Manual.

*See Section 12 Finishing Program for select Colourtone and glaze combinations.

Inset Door Diagram (w/center stile)

