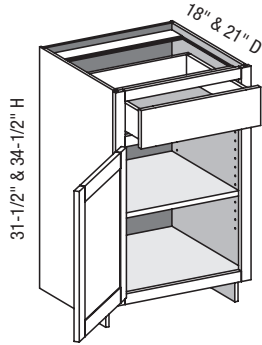


**VB/CSB - Vanity Base**



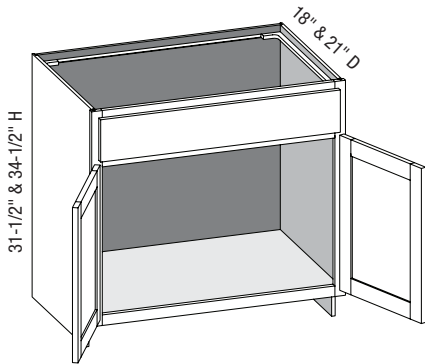
EXP	FL	FUE	SS	PFD	EXT	FT	SBR	LE	TSS	OS	NSH	WS	MI	DT	NB
✓	✓	✓	✓	✓	✓	✓	✓	✓	✓	✓	✓	✓	✓	✓	✓

Custom Size Ranges  
Width: 12" – 24"  
Height: 31-1/2" – 42"  
Depth: 12", 15", 18", 21",  
24", 27", 30"

- When height changes, lower opening height changes. Upper opening height fixed at 5".
- Specify single or butt doors on custom size cabinets 24" wide.

Cabinet Code	
VB1231.5	VB1234.5
VB1531.5	VB1534.5
VB1831.5	VB1834.5
VB2131.5	VB2134.5

**VS/CSBS - Vanity Sink w/Butt Doors**



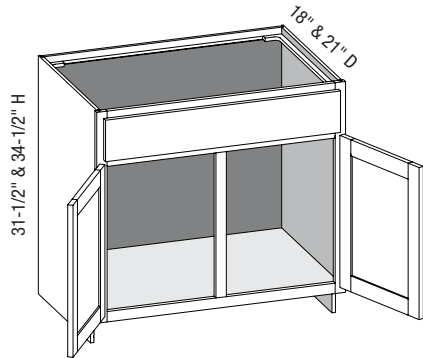
EXP	FL	FUE	SS	PFD	EXT	FT	SBR	LE	TSS	OS	NSH	WS	MI	DT	NB
✓	✓	✓	✓	✓	✓	✓	✓	✓	✓	STD	STD		✓		

Custom Size Ranges  
Width: 24" – 36"  
Height: 31-1/2" – 42"  
Depth: 18" – 30"

- False drawer front.
- When height changes, lower opening height changes. Upper opening height fixed at 5".
- Specify single or butt doors on custom size cabinets 24" wide.

Cabinet Code	
VS2431.5BD	VS2434.5BD
VS2731.5BD	VS2734.5BD
VS3031.5BD	VS3034.5BD
VS3331.5BD	VS3334.5BD
VS3631.5BD	VS3634.5BD

### VS/CSBS2D1D - Vanity Sink Two Door One Drawer



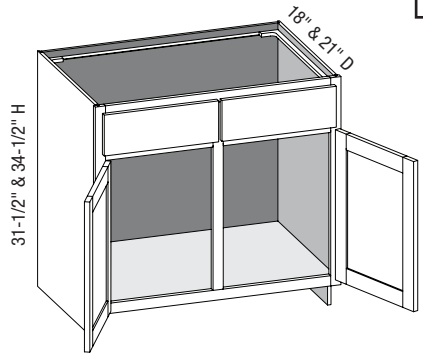
EXP	FL	FUE	SS	PFD	EXT	FT	SBR	LE	TSS	OS	NSH	WS	MI	DT	NB
✓	✓	✓	✓	✓	✓	✓	✓	✓	✓	STD	STD		✓		

Custom Size Ranges  
 Width: 27" – 36"  
 Height: 31-1/2" – 42"  
 Depth: 18" – 30"

- False drawer front.
- When height changes, lower opening height changes. Upper opening height fixed at 5".

Cabinet Code	
VS3031.5	VS3034.5
VS3331.5	VS3334.5
VS3631.5	VS3634.5

### VSX/CSBS2D2D - Vanity Sink Two Door Two Drawer



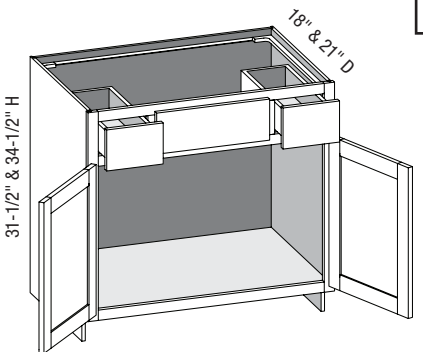
EXP	FL	FUE	SS	PFD	EXT	FT	SBR	LE	TSS	OS	NSH	WS	MI	DT	NB
✓	✓	✓	✓	✓	✓	✓	✓	✓	✓	STD	STD		✓		

Custom Size Ranges  
 Width: 30" – 48"  
 Height: 31-1/2" – 42"  
 Depth: 18" – 30"

- Two false drawer fronts.
- When height changes, lower opening height changes. Upper opening height fixed at 5".

Cabinet Code	
VSX3031.5	VSX3034.5
VSX3631.5	VSX3634.5

### VBS/CSVBS - Vanity Base Sink w/Butt Doors



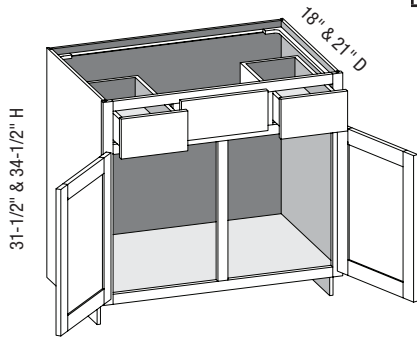
EXP	FL	FUE	SS	PFD	EXT	FT	SBR	LE	TSS	OS	NSH	WS	MI	DT	NB
✓	✓	✓	✓	✓	✓	✓	✓	✓	✓	STD	STD		✓		

Custom Size Ranges  
 Width: 36"  
 Height: 31-1/2" – 42"  
 Depth: 12", 15", 18", 21", 24", 27", 30"

- False top middle drawer front.
- When height changes, lower opening height changes. Upper opening height fixed at 5".

Cabinet Code	
VBS3631.5BD	VBS3634.5BD

### VBS/CSVSCS - Vanity Base Sink w/Center Stile



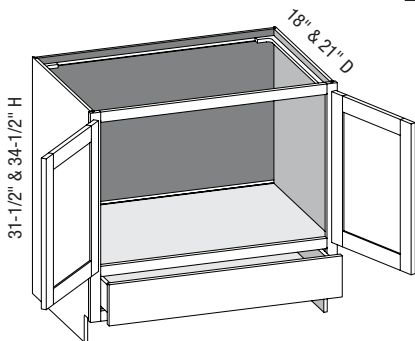
EXP	FL	FUE	SS	PFD	EXT	FT	SBR	LE	TSS	OS	NSH	WS	MI	DT	NB
✓	✓	✓	✓	✓	✓	✓	✓	✓	✓	STD	STD		✓		

Custom Size Ranges  
 Width: 36" – 48"  
 Height: 31-1/2" – 42"  
 Depth: 12", 15", 18", 21"  
 24", 27", 30"

- False top middle drawer front.
- When height changes, lower opening height changes. Upper opening height fixed at 5".
- When width changes, middle opening width changes. Left and right opening widths fixed at 9".

Cabinet Code	
VBS4231.5	VBS4234.5
VBS4831.5	VBS4834.5

### VSRV/CSVSRV - Vanity Sink Reverse w/Butt Doors



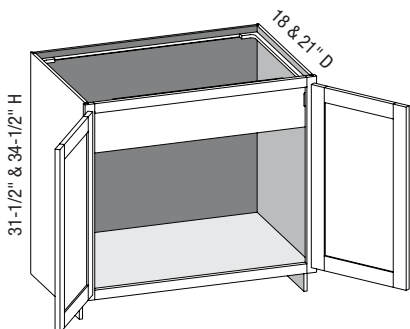
EXP	FL	FUE	SS	PFD	EXT	FT	SBR	LE	TSS	OS	NSH	WS	MI	DT	NB
✓	✓	✓	✓	✓	✓	✓	✓	✓	✓	STD	STD		✓		

Custom Size Ranges  
 Width: 24" – 36"  
 Height: 31-1/2" – 42"  
 Depth: 12", 15", 18", 21"  
 24", 27", 30"

- When height changes, top opening height changes. Lower opening height fixed at 5".

Cabinet Code	
VSRV2431.5BD	VSRV2434.5BD
VSRV3031.5BD	VSRV3034.5BD
VSRV3631.5BD	VSRV3634.5BD

### VSFD/CSBSFD - Vanity Base Sink Full Door w/Butt Doors



EXP	FL	FUE	SS	PFD	EXT	FT	SBR	LE	TSS	OS	NSH	WS	MI	DT	NB
✓	✓	✓	✓		✓	✓	✓	✓	✓		STD		✓		

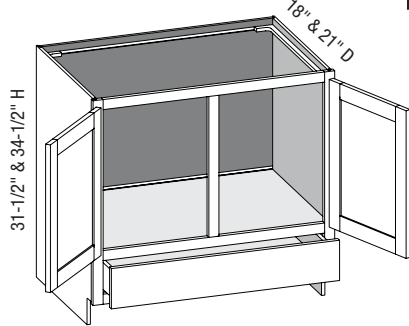
Custom Size Ranges  
 Width: 24" – 36"  
 Height: 31-1/2" – 34-1/2"  
 Depth: 18" – 30"

- 6-3/4" high apron conceals sink bowl, accommodates hinges and matches cabinet interior.
- Specify single or butt doors on custom size cabinets 24" wide.

Cabinet Code	
VSFD2431.5BD	VSFD2434.5BD
VSFD2731.5BD	VSFD2734.5BD
VSFD3031.5BD	VSFD3034.5BD
VSFD3331.5BD	VSFD3334.5BD
VSFD3631.5BD	VSFD3634.5BD

**Options Key:** EXP = Exposed End(s) FL = Flush End(s) FUE = Flush Unexposed End(s) SS = Shaped Side PFD = Prep for False Door  
 EXT = Extended Stile(s) FT = Flush Toe SBR = Shaped Bottom Rail LE = Leg Extension TSS = Toe Space Side OS = Omit Shelving  
 NSH = No Shelf Holes WS = Solid Wood Shelves MI = Matching Interior DT = Dust Top NB = Natural Finished Bottom

### VSRV/CSVSRVCS - Vanity Sink Reverse w/Center Stile



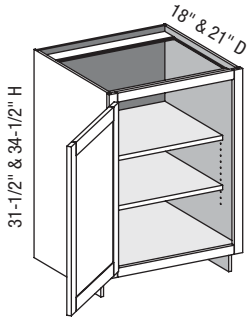
EXP	FL	FUE	SS	PFD	EXT	FT	SBR	LE	TSS	OS	NSH	WS	MI	DT	NB
✓	✓	✓	✓	✓	✓	✓	✓	✓	✓	STD	STD		✓		

Custom Size Ranges  
 Width: 30" – 36"  
 Height: 31-1/2" – 42"  
 Depth: 12", 15", 18", 21"  
 24", 27", 30"

- When height changes, top opening height changes. Lower opening height fixed at 5".

Cabinet Code	
VSRV3031.5	VSRV3034.5
VSRV3631.5	VSRV3634.5

### VBF/CSBFD - Vanity Base Full Door



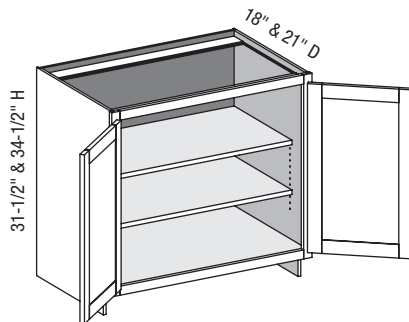
EXP	FL	FUE	SS	PFD	EXT	FT	SBR	LE	TSS	OS	NSH	WS	MI	DT	NB
✓	✓	✓	✓	✓	✓	✓	✓	✓	✓	✓	✓	✓	✓	✓	

Custom Size Ranges  
 Width: 9" – 24"  
 Height: 10" – 48"  
 Depth: 5-1/2" – 30"

- 10" – 22" high has no shelves.
- 22-1/16" – 28" high has one shelf.
- 28-1/16" – 40" high has two shelves.
- 40-1/16" – 48" high has three shelves.
- Specify single or butt doors on custom size cabinets 24" wide.

Cabinet Code	
VBF1831.5	VBF1834.5

### VBF/CSBFD - Vanity Base Full Door w/Butt Doors



EXP	FL	FUE	SS	PFD	EXT	FT	SBR	LE	TSS	OS	NSH	WS	MI	DT	NB
✓	✓	✓	✓	✓	✓	✓	✓	✓	✓	✓	✓	✓	✓	✓	

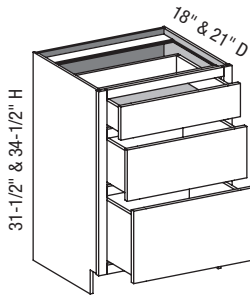
Custom Size Ranges  
 Width: 24" – 36"  
 Height: 10" – 48"  
 Depth: 5-1/2" – 30"

- 10" – 22" high has no shelves.
- 22-1/16" – 28" high has one shelf.
- 28-1/16" – 40" high has two shelves.
- 40-1/16" – 48" high has three shelves.
- Specify single or butt doors on custom size cabinets 24" wide.

Cabinet Code	
VBF2431.5BD	VBF2434.5BD
VBF2731.5BD	VBF2734.5BD
VBF3031.5BD	VBF3034.5BD
VBF3631.5BD	VBF3634.5BD

**Options Key:** EXP = Exposed End(s) FL = Flush End(s) FUE = Flush Unexposed End(s) SS = Shaped Side PFD = Prep for False Door  
 EXT = Extended Stile(s) FT = Flush Toe SBR = Shaped Bottom Rail LE = Leg Extension TSS = Toe Space Side OS = Omit Shelving  
 NSH = No Shelf Holes WS = Solid Wood Shelves MI = Matching Interior DT = Dust Top NB = Natural Finished Bottom

**V3D/CSB3D - Vanity Three Drawer**



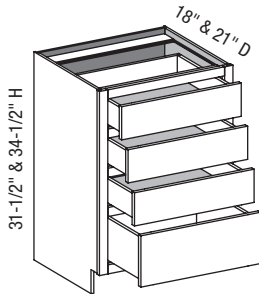
EXP	FL	FUE	SS	PFD	EXT	FT	SBR	LE	TSS	OS	NSH	WS	MI	DT	NB
✓	✓	✓	✓	✓	✓	✓	✓	✓	✓	✓	STD	STD		✓	✓

Custom Size Ranges  
 Width: 12" – 39"  
 Height: 31-1/2" – 34-1/2"  
 Depth: 12", 15", 18", 21"  
 24", 27", 30"

- When height changes, lower opening height changes. Upper and middle opening heights fixed at 5" and 8".

Cabinet Code	
V3D1231.5	V3D1234.5
V3D1531.5	V3D1534.5
V3D1831.5	V3D1834.5
V3D2131.5	V3D2134.5
V3D2431.5	V3D2434.5

**V4D/CSB4D - Vanity Four Drawer**



EXP	FL	FUE	SS	PFD	EXT	FT	SBR	LE	TSS	OS	NSH	WS	MI	DT	NB
✓	✓	✓	✓	✓	✓	✓	✓	✓	✓	✓	STD	STD		✓	✓

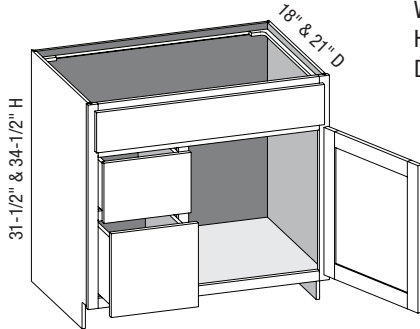
Custom Size Ranges  
 Width: 12" – 39"  
 Height: 31-1/2" – 34-1/2"  
 Depth: 12", 15", 18", 21"  
 24", 27", 30"

- When height changes, lower opening height changes. Upper opening heights fixed at 5".

Cabinet Code	
V4D1231.5	V4D1234.5
V4D1531.5	V4D1534.5
V4D1831.5	V4D1834.5
V4D2131.5	V4D2134.5
V4D2431.5	V4D2434.5

### VCL/CSVCL - Vanity Combination Left

EXP	FL	FUE	SS	PFD	EXT	FT	SBR	LE	TSS	OS	NSH	WS	MI	DT	NB
✓	✓	✓	✓	✓	✓	✓	✓	✓	✓	STD	STD		✓		



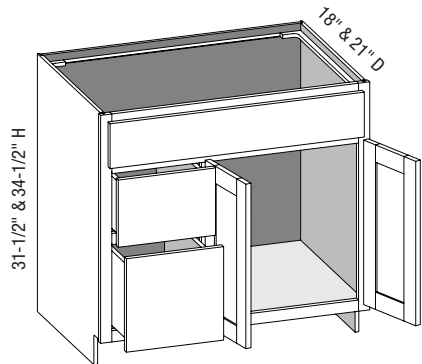
Custom Size Ranges  
 Width: 30" – 36"  
 Height: 31-1/2" – 34-1/2"  
 Depth: 12", 15", 18", 21"  
 24", 27", 30"

- False top drawer front.
- When height changes, lower opening heights change. Upper and middle opening heights fixed at 5" and 8".
- When width changes, door and false drawer openings change. Lower drawer openings fixed at 12".
- Doors hinged on center stile require 1/2" overlay hinges for 1-1/4" or 1-3/8" overlays.
- Specify single or butt doors on custom size cabinets 36" wide.

Cabinet Code	
VCL3031.5	VCL3034.5
VCL3331.5	VCL3334.5
VCL3631.5	VCL3634.5

### VCL/CSVCL - Vanity Combination Left w/Butt Doors

EXP	FL	FUE	SS	PFD	EXT	FT	SBR	LE	TSS	OS	NSH	WS	MI	DT	NB
✓	✓	✓	✓	✓	✓	✓	✓	✓	✓	STD	STD		✓		



Custom Size Ranges  
 Width: 36" – 48"  
 Height: 31-1/2" – 34-1/2"  
 Depth: 12", 15", 18", 21"  
 24", 27", 30"

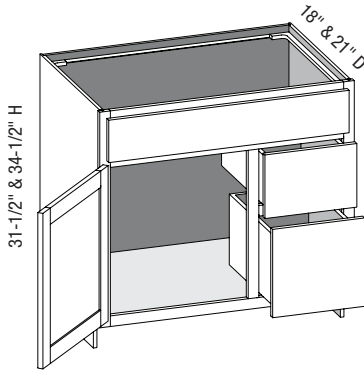
- False top drawer front.
- When height changes, lower opening heights change. Upper and middle opening heights fixed at 5" and 8".
- When width changes, door and false drawer openings change. Lower drawer openings fixed at 12".
- Doors hinged on center stile require 1/2" overlay hinges for 1-1/4" or 1-3/8" overlays.
- Specify single or butt doors on custom size cabinets 36" wide.

Cabinet Code	
VCL4231.5BD	VCL4234.5BD
VCL4831.5BD	VCL4834.5BD

**Options Key:** EXP = Exposed End(s) FL = Flush End(s) FUE = Flush Unexposed End(s) SS = Shaped Side PFD = Prep for False Door  
 EXT = Extended Stile(s) FT = Flush Toe SBR = Shaped Bottom Rail LE = Leg Extension TSS = Toe Space Side OS = Omit Shelving  
 NSH = No Shelf Holes WS = Solid Wood Shelves MI = Matching Interior DT = Dust Top NB = Natural Finished Bottom

**VCR/CSVCR - Vanity Combination Right**

EXP	FL	FUE	SS	PFD	EXT	FT	SBR	LE	TSS	OS	NSH	WS	MI	DT	NB
✓	✓	✓	✓	✓	✓	✓	✓	✓	✓	STD	STD		✓		



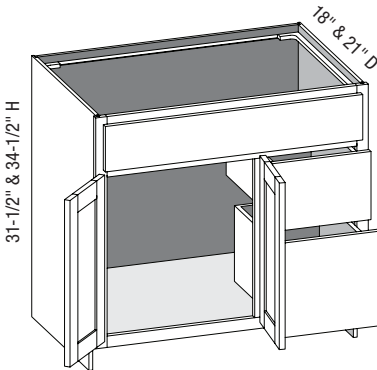
Custom Size Ranges  
 Width: 30" – 36"  
 Height: 31-1/2" – 34-1/2"  
 Depth: 12", 15", 18", 21"  
 24", 27", 30"

- False top drawer front.
- When height changes, lower opening heights change. Upper and middle opening heights fixed at 5" and 8".
- When width changes, door and false drawer openings change. Lower drawer openings fixed at 12".
- Doors hinged on center stile require 1/2" overlay hinges for 1-1/4" or 1-3/8" overlays.
- Specify single or butt doors on custom size cabinets 36" wide.

Cabinet Code	
VCR3031.5	VCR3034.5
VCR3331.5	VCR3334.5
VCR3631.5	VCR3634.5

**VCR/CSVCR - Vanity Combination Right w/Butt Doors**

EXP	FL	FUE	SS	PFD	EXT	FT	SBR	LE	TSS	OS	NSH	WS	MI	DT	NB
✓	✓	✓	✓	✓	✓	✓	✓	✓	✓	STD	STD		✓		



Custom Size Ranges  
 Width: 36" – 48"  
 Height: 31-1/2" – 34-1/2"  
 Depth: 12", 15", 18", 21"  
 24", 27", 30"

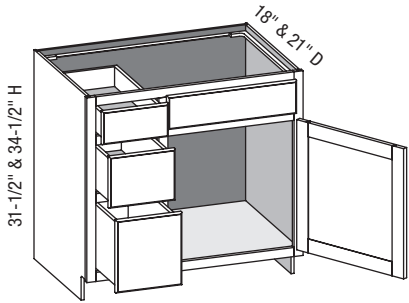
- False top drawer front.
- When height changes, lower opening heights change. Upper and middle opening heights fixed at 5" and 8".
- When width changes, door and false drawer openings change. Lower drawer openings fixed at 12".
- Doors hinged on center stile require 1/2" overlay hinges for 1-1/4" or 1-3/8" overlays.
- Specify single or butt doors on custom size cabinets 36" wide.

Cabinet Code	
VCR4231.5BD	VCR4234.5BD
VCR4831.5BD	VCR4834.5BD

**Options Key:** EXP = Exposed End(s) FL = Flush End(s) FUE = Flush Unexposed End(s) SS = Shaped Side PFD = Prep for False Door  
 EXT = Extended Stile(s) FT = Flush Toe SBR = Shaped Bottom Rail LE = Leg Extension TSS = Toe Space Side OS = Omit Shelving  
 NSH = No Shelf Holes WS = Solid Wood Shelves MI = Matching Interior DT = Dust Top NB = Natural Finished Bottom

### VC3DL/CSVC3DL - Vanity Combo Three Drawer Left

EXP	FL	FUE	SS	PFD	EXT	FT	SBR	LE	TSS	OS	NSH	WS	MI	DT	NB
✓	✓	✓	✓	✓	✓	✓	✓	✓	✓	STD	STD		✓		



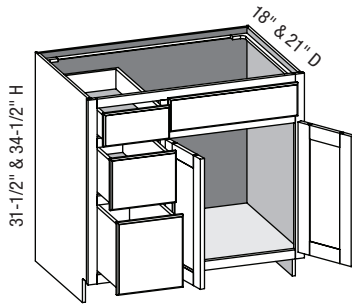
Custom Size Ranges  
 Width: 36" – 48"  
 Height: 31-1/2" – 34-1/2"  
 Depth: 12", 15", 18", 21"  
 24", 27", 30"

- When width changes, door and false drawer openings remain fixed.
- Doors hinged on center stile require 1/2" overlay hinges for 1-1/4" or 1-3/8" overlays.

Cabinet Code	
VC3DL3631.5	VC3DL3634.5
VC3DL3931.5	VC3DL3934.5
VC3DL4231.5	VC3DL4234.5
VC3DL4531.5	VC3DL4534.5
VC3DL4831.5	VC3DL4834.5

### VC3DL/CSVC3DL - Vanity Combo Three Drawers w/Butt Doors

EXP	FL	FUE	SS	PFD	EXT	FT	SBR	LE	TSS	OS	NSH	WS	MI	DT	NB
✓	✓	✓	✓	✓	✓	✓	✓	✓	✓	STD	STD		✓		



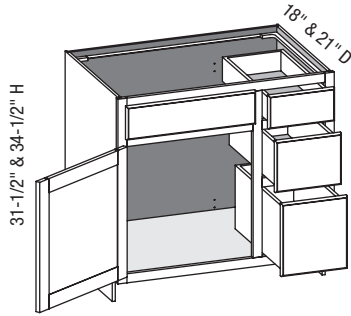
Custom Size Ranges  
 Width: 36" – 48"  
 Height: 31-1/2" – 34-1/2"  
 Depth: 12", 15", 18", 21"  
 24", 27", 30"

- When width changes, door and false drawer openings remain fixed.
- Doors hinged on center stile require 1/2" overlay hinges for 1-1/4" or 1-3/8" overlays.

Cabinet Code	
VC3DL3631.5BD	VC3DL3634.5BD
VC3DL3931.5BD	VC3DL3934.5BD
VC3DL4231.5BD	VC3DL4234.5BD
VC3DL4531.5BD	VC3DL4534.5BD
VC3DL4831.5BD	VC3DL4834.5BD



### VC3DR/CSVC3DR - Vanity Combo Three Drawer Right



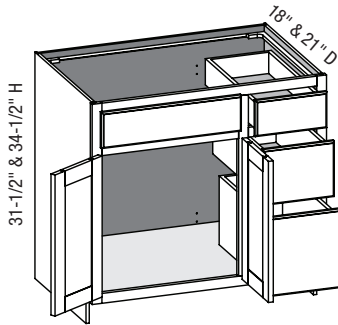
EXP	FL	FUE	SS	PFD	EXT	FT	SBR	LE	TSS	OS	NSH	WS	MI	DT	NB
✓	✓	✓	✓	✓	✓	✓	✓	✓	✓	STD	STD		✓		

Custom Size Ranges  
 Width: 36" – 48"  
 Height: 31-1/2" – 34-1/2"  
 Depth: 12", 15", 18", 21"  
 24", 27", 30"

- When width changes, door and false drawer openings remain fixed.
- When height changes, lower opening heights change. Upper and middle opening heights fixed at 5" and 8".
- Doors hinged on center stile require 1/2" overlay hinges for 1-1/4" or 1-3/8" overlays.

Cabinet Code	
VC3DR3631.5	VC3DR3634.5
VC3DR3931.5	VC3DR3934.5
VC3DR4231.5	VC3DR4234.5
VC3DR4531.5	VC3DR4534.5
VC3DR4831.5	VC3DR4834.5

### VC3DR/CSVC3DR - Vanity Combo Three Drawers w/Butt Doors



EXP	FL	FUE	SS	PFD	EXT	FT	SBR	LE	TSS	OS	NSH	WS	MI	DT	NB
✓	✓	✓	✓	✓	✓	✓	✓	✓	✓	STD	STD		✓		

Custom Size Ranges  
 Width: 36" – 48"  
 Height: 31-1/2" – 34-1/2"  
 Depth: 12", 15", 18", 21"  
 24", 27", 30"

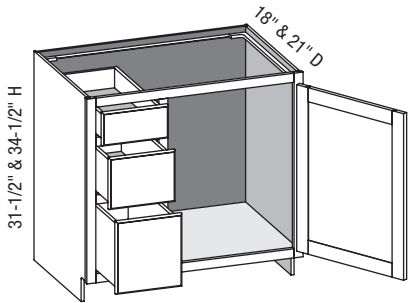
- When width changes, door and false drawer openings remain fixed.
- When height changes, lower opening heights change. Upper and middle opening heights fixed at 5" and 8".
- Doors hinged on center stile require 1/2" overlay hinges for 1-1/4" or 1-3/8" overlays.
- Specify single or butt doors on custom size cabinets 36" wide.

Cabinet Code	
VC3DR3631.5BD	VC3DR3634.5BD
VC3DR3931.5BD	VC3DR3934.5BD
VC3DR4231.5BD	VC3DR4234.5BD
VC3DR4531.5BD	VC3DR4534.5BD
VC3DR4831.5BD	VC3DR4834.5BD

**Options Key:** EXP = Exposed End(s) FL = Flush End(s) FUE = Flush Unexposed End(s) SS = Shaped Side PFD = Prep for False Door  
 EXT = Extended Stile(s) FT = Flush Toe SBR = Shaped Bottom Rail LE = Leg Extension TSS = Toe Space Side OS = Omit Shelving  
 NSH = No Shelf Holes WS = Solid Wood Shelves MI = Matching Interior DT = Dust Top NB = Natural Finished Bottom

### VCFD3DL/CSVCFD3DL - Vanity Combo Full Door Three Drawer Left

EXP	FL	FUE	SS	PFD	EXT	FT	SBR	LE	TSS	OS	NSH	WS	MI	DT	NB
✓	✓	✓	✓	✓	✓	✓	✓	✓	✓	STD	STD		✓		



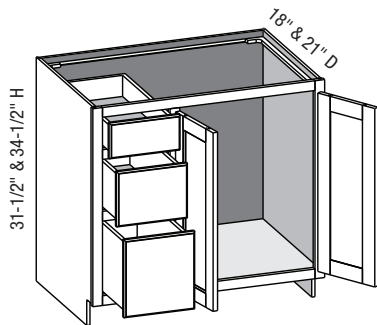
Custom Size Ranges  
 Width: 36" – 48"  
 Height: 31-1/2" – 34-1/2"  
 Depth: 12", 15", 18", 21"  
 24", 27", 30"

- When width changes, door opening remains fixed.
- When height changes, lower opening heights change. Upper and middle drawer opening heights fixed at 5" and 8".
- Doors hinged on center stile require 1/2" overlay hinges for 1-1/4" or 1-3/8" overlays.

Cabinet Code	
VCFD3DL3631.5	VCFD3DL3634.5
VCFD3DL3931.5	VCFD3DL3934.5
VCFD3DL4231.5	VCFD3DL4234.5
VCFD3DL4531.5	VCFD3DL4534.5
VCFD3DL4831.5	VCFD3DL4834.5

### VCFD3DL/CSVCFD3DL - Vanity Combo Full Door Three Drawers Left w/Butt Doors

EXP	FL	FUE	SS	PFD	EXT	FT	SBR	LE	TSS	OS	NSH	WS	MI	DT	NB
✓	✓	✓	✓	✓	✓	✓	✓	✓	✓	STD	STD		✓		



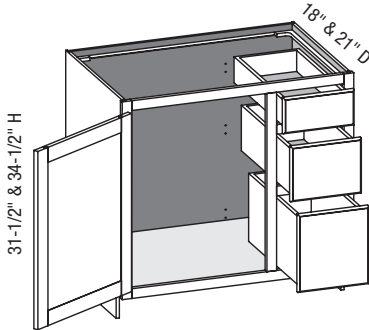
Custom Size Ranges  
 Width: 36" – 48"  
 Height: 31-1/2" – 34-1/2"  
 Depth: 12", 15", 18", 21"  
 24", 27", 30"

- When width changes, door opening remains fixed.
- When height changes, lower opening heights change. Upper and middle drawer opening heights fixed at 5" and 8".
- Doors hinged on center stile require 1/2" overlay hinges for 1-1/4" or 1-3/8" overlays.
- Specify single or butt doors on custom size cabinets 36" wide.

Cabinet Code	
VCFD3DL3631.5BD	VCFD3DL3634.5BD
VCFD3DL3931.5BD	VCFD3DL3934.5BD
VCFD3DL4231.5BD	VCFD3DL4234.5BD
VCFD3DL4531.5BD	VCFD3DL4534.5BD
VCFD3DL4831.5BD	VCFD3DL4834.5BD

**Options Key:** EXP = Exposed End(s) FL = Flush End(s) FUE = Flush Unexposed End(s) SS = Shaped Side PFD = Prep for False Door  
 EXT = Extended Stile(s) FT = Flush Toe SBR = Shaped Bottom Rail LE = Leg Extension TSS = Toe Space Side OS = Omit Shelving  
 NSH = No Shelf Holes WS = Solid Wood Shelves MI = Matching Interior DT = Dust Top NB = Natural Finished Bottom

**VCFD3DR/CSVCFD3DR - Vanity Combo Full Door Three Drawer Right**



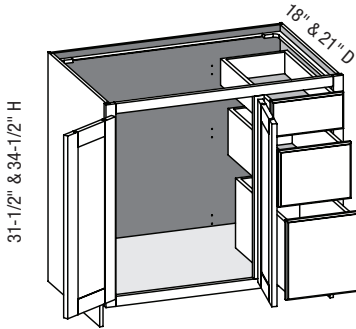
EXP	FL	FUE	SS	PFD	EXT	FT	SBR	LE	TSS	OS	NSH	WS	MI	DT	NB
✓	✓	✓	✓	✓	✓	✓	✓	✓	✓	STD	STD		✓		

Custom Size Ranges  
Width: 36" – 48"  
Height: 31-1/2" – 34-1/2"  
Depth: 12", 15", 18", 21"  
24", 27", 30"

- When width changes, door opening remains fixed.
- When height changes, lower opening heights change. Upper and middle drawer opening heights fixed at 5" and 8".
- Doors hinged on center stile require 1/2" overlay hinges for 1-1/4" or 1-3/8" overlays.

Cabinet Code	
VCFD3DR3631.5	VCFD3DR3634.5
VCFD3DR3931.5	VCFD3DR3934.5
VCFD3DR4231.5	VCFD3DR4234.5
VCFD3DR4531.5	VCFD3DR4534.5
VCFD3DR4831.5	VCFD3DR4834.5

**VCFD3DR/CSVCFD3DR - Vanity Combo Full Door Three Drawers Right w/Butt Doors**



EXP	FL	FUE	SS	PFD	EXT	FT	SBR	LE	TSS	OS	NSH	WS	MI	DT	NB
✓	✓	✓	✓	✓	✓	✓	✓	✓	✓	STD	STD		✓		

Custom Size Ranges  
Width: 36" – 48"  
Height: 31-1/2" – 34-1/2"  
Depth: 12", 15", 18", 21"  
24", 27", 30"

- When width changes, door opening remains fixed.
- When height changes, lower opening heights change. Upper and middle drawer opening heights fixed at 5" and 8".
- Doors hinged on center stile require 1/2" overlay hinges for 1-1/4" or 1-3/8" overlays.
- Specify single or butt doors on custom size cabinets 36" wide.

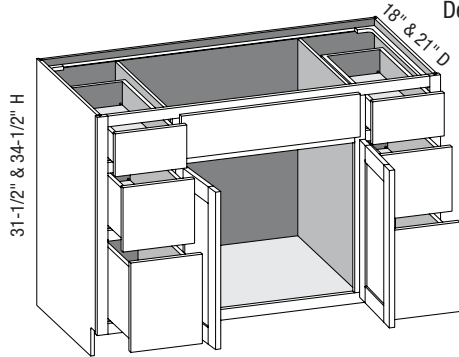
Cabinet Code	
VCFD3DR3631.5BD	VCFD3DR3634.5BD
VCFD3DR3931.5BD	VCFD3DR3934.5BD
VCFD3DR4231.5BD	VCFD3DR4234.5BD
VCFD3DR4531.5BD	VCFD3DR4534.5BD
VCFD3DR4831.5BD	VCFD3DR4834.5BD

**Options Key:** EXP = Exposed End(s) FL = Flush End(s) FUE = Flush Unexposed End(s) SS = Shaped Side PFD = Prep for False Door  
EXT = Extended Stile(s) FT = Flush Toe SBR = Shaped Bottom Rail LE = Leg Extension TSS = Toe Space Side OS = Omit Shelving  
NSH = No Shelf Holes WS = Solid Wood Shelves MI = Matching Interior DT = Dust Top NB = Natural Finished Bottom

### VC6D/CSVC6D - Vanity Combination Six Drawer w/Butt Doors

EXP	FL	FUE	SS	PFD	EXT	FT	SBR	LE	TSS	OS	NSH	WS	MI	DT	NB
✓	✓	✓	✓	✓	✓	✓	✓		✓	STD	STD		✓		

Custom Size Ranges  
 Width: 48" – 72"  
 Height: 31-1/2" – 34-1/2"  
 Depth: 12", 15", 18", 21"  
 24", 27", 30"



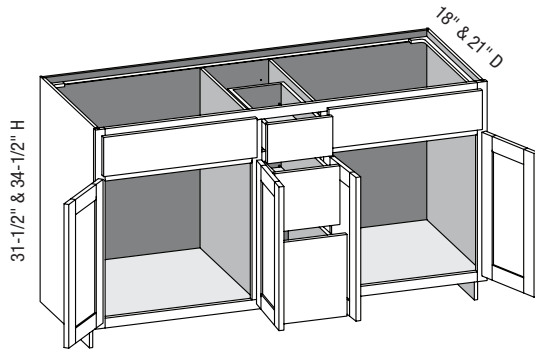
- One false top drawer front, two functional top drawers.
- When height changes, lower opening heights change. Upper and middle drawer openings heights fixed at 5" and 8".
- When width changes, door and false drawer front openings change.
- Doors hinged on center stile require 1/2" overlay hinges for 1-1/4" or 1-3/8" overlays.

Cabinet Code	
VC6D4831.5BD	VC6D4834.5BD
VC6D6031.5BD	VC6D6034.5BD

### VC3D/CSVC3D - Vanity Combination Three Drawer w/Butt Doors

EXP	FL	FUE	SS	PFD	EXT	FT	SBR	LE	TSS	OS	NSH	WS	MI	DT	NB
✓	✓	✓	✓	✓	✓	✓	✓	✓	✓	STD	STD		✓		

Custom Size Ranges  
 Width: 48" – 72"  
 Height: 31-1/2" – 34-1/2"  
 Depth: 12", 15", 18", 21"  
 24", 27", 30"

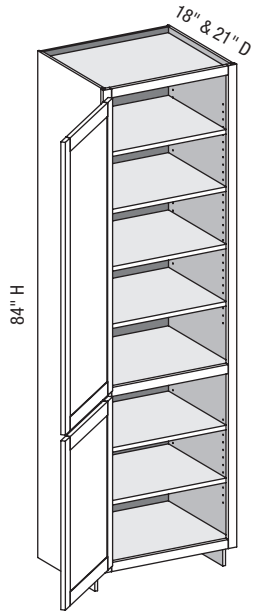


- Two false top drawer fronts, one functional top drawer.
- When height changes, lower opening heights change. Upper and middle drawer openings heights fixed at 5" and 8".
- When width changes, door and false drawer front openings change.
- Doors hinged on center stile require 1/2" overlay hinges for 1-1/4" or 1-3/8" overlays.

Cabinet Code	
VC3D6031.5BD	VC3D6034.5BD

**Options Key:** EXP = Exposed End(s) FL = Flush End(s) FUE = Flush Unexposed End(s) SS = Shaped Side PFD = Prep for False Door  
 EXT = Extended Stile(s) FT = Flush Toe SBR = Shaped Bottom Rail LE = Leg Extension TSS = Toe Space Side OS = Omit Shelving  
 NSH = No Shelf Holes WS = Solid Wood Shelves MI = Matching Interior DT = Dust Top NB = Natural Finished Bottom

**VLV/CSVLV - Vanity Linen Vanity Height**



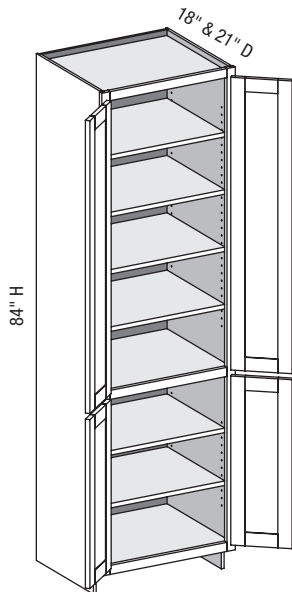
EXP	FL	FUE	SS	PFD	EXT	FT	SBR	LE	TSS	OS	NSH	WS	MI	DT	NB
✓	✓	✓	✓	✓	✓	✓	✓	✓		✓	✓	✓	✓		

Custom Size Ranges  
Width: 12" – 24"  
Height: 84" – 120"  
Depth: 5-1/2" – 30"

- Lower section aligns with 31-1/2" high vanity cabinets.
- Matching specie interior is not available over 96" high. Natural Birch UV material will be used.
- When height changes, upper opening height changes. Lower opening height fixed at 24-1/2".
- 84" – 90" high has six shelves.
- 90-1/16" – 96" high has seven shelves.
- 96-1/16" – 108" high has eight shelves.
- 108-1/16" – 120" high has nine shelves.
- Separate 4" high toe platform is available with all cabinet heights.
- Specify single or butt doors on custom size cabinets 24" wide.

Cabinet Code	
VLV1884	VLV2484
VLV2184	

**VLV/CSVLV - Vanity Linen Vanity Height w/Butt Doors**



EXP	FL	FUE	SS	PFD	EXT	FT	SBR	LE	TSS	OS	NSH	WS	MI	DT	NB
✓	✓	✓	✓	✓	✓	✓	✓	✓		✓	✓	✓	✓		

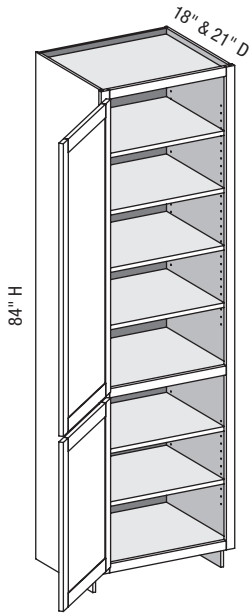
Custom Size Ranges  
Width: 24" – 36"  
Height: 84" – 120"  
Depth: 5-1/2" – 30"

- Lower section aligns with 31-1/2" high vanity cabinets.
- Matching specie interior is not available over 96" high. Natural Birch UV material will be used.
- When height changes, upper opening height changes. Lower opening height fixed at 24-1/2".
- 84" – 90" high has six shelves.
- 90-1/16" – 96" high has seven shelves.
- 96-1/16" – 108" high has eight shelves.
- 108-1/16" – 120" high has nine shelves.
- Separate 4" high toe platform is available with all cabinet heights.
- Specify single or butt doors on custom size cabinets 24" wide.

Cabinet Code
VLV2484BD

**Options Key:** EXP = Exposed End(s) FL = Flush End(s) FUE = Flush Unexposed End(s) SS = Shaped Side PFD = Prep for False Door  
EXT = Extended Stile(s) FT = Flush Toe SBR = Shaped Bottom Rail LE = Leg Extension TSS = Toe Space Side OS = Omit Shelving  
NSH = No Shelf Holes WS = Solid Wood Shelves MI = Matching Interior DT = Dust Top NB = Natural Finished Bottom

### VLB/CSUCR - Vanity Linen Base Height



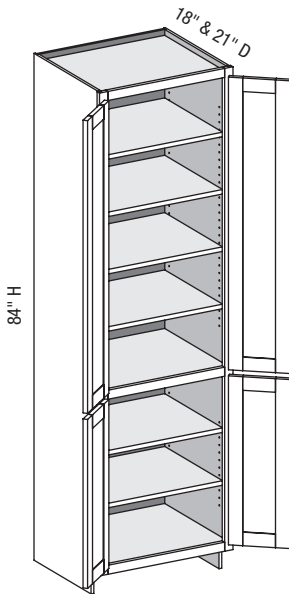
EXP	FL	FUE	SS	PFD	EXT	FT	SBR	LE	TSS	OS	NSH	WS	MI	DT	NB
✓	✓	✓	✓	✓	✓	✓	✓	✓	✓	✓	✓	✓	✓		

Custom Size Ranges  
 Width: 12" – 24"  
 Height: 84" – 120"  
 Depth: 5-1/2" – 30"

- Lower section aligns with 34-1/2" high vanity cabinets.
- Matching specie interior is not available over 96" high. Natural Birch UV material will be used.
- When height changes, upper opening height changes. Lower opening height fixed at 27-1/2".
- 84" – 90" high has six shelves.
- 90-1/16" – 96" high has seven shelves.
- 96-1/16" – 108" high has eight shelves.
- 108-1/16" – 120" high has nine shelves.
- Separate 4" high toe platform is available with all cabinet heights.
- Specify single or butt doors on custom size cabinets 24" wide.

Cabinet Code	
VLB1884	VLB2484
VLB2184	

### VLB/CSUCR - Vanity Linen Base Height w/Butt Doors



EXP	FL	FUE	SS	PFD	EXT	FT	SBR	LE	TSS	OS	NSH	WS	MI	DT	NB
✓	✓	✓	✓	✓	✓	✓	✓	✓	✓	✓	✓	✓	✓		

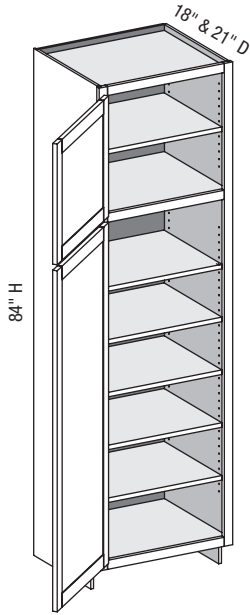
Custom Size Ranges  
 Width: 24" – 36"  
 Height: 84" – 120"  
 Depth: 5-1/2" – 30"

- Lower section aligns with 34-1/2" high vanity cabinets.
- Matching specie interior is not available over 96" high. Natural Birch UV material will be used.
- When height changes, upper opening height changes. Lower opening height fixed at 27-1/2".
- 84" – 90" high has six shelves.
- 90-1/16" – 96" high has seven shelves.
- 96-1/16" – 108" high has eight shelves.
- 108-1/16" – 120" high has nine shelves.
- Separate 4" high toe platform is available with all cabinet heights.
- Specify single or butt doors on custom size cabinets 24" wide.

Cabinet Code
VLB2484BD

**Options Key:** EXP = Exposed End(s) FL = Flush End(s) FUE = Flush Unexposed End(s) SS = Shaped Side PFD = Prep for False Door  
 EXT = Extended Stile(s) FT = Flush Toe SBR = Shaped Bottom Rail LE = Leg Extension TSS = Toe Space Side OS = Omit Shelving  
 NSH = No Shelf Holes WS = Solid Wood Shelves MI = Matching Interior DT = Dust Top NB = Natural Finished Bottom

**VUC/CSUC - Vanity Utility**



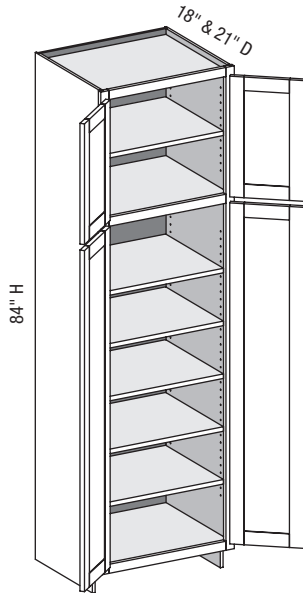
EXP	FL	FUE	SS	PFD	EXT	FT	SBR	LE	TSS	OS	NSH	WS	MI	DT	NB
✓	✓	✓	✓	✓	✓	✓	✓	✓	✓	✓	✓	✓	✓		

Custom Size Ranges  
Width: 12" – 24"  
Height: 84" – 120"  
Depth: 5-1/2" – 30"

- Matching specie interior is not available over 96" high. Natural Birch UV material will be used.
- When height changes, upper opening height changes. Lower opening height fixed at 56".
- 84" – 90" high has six shelves.
- 90-1/16" – 96" high has seven shelves.
- 96-1/16" – 108" high has eight shelves.
- 108-1/16" – 120" high has nine shelves.
- Separate 4" high toe platform is available with all cabinet heights.
- Specify single or butt doors on custom size cabinets 24" wide.

Cabinet Code	
VUC1884	VUC2484
VUC2184	

**VUC/CSUC - Vanity Utility w/Butt Doors**



EXP	FL	FUE	SS	PFD	EXT	FT	SBR	LE	TSS	OS	NSH	WS	MI	DT	NB
✓	✓	✓	✓	✓	✓	✓	✓	✓	✓	✓	✓	✓	✓		

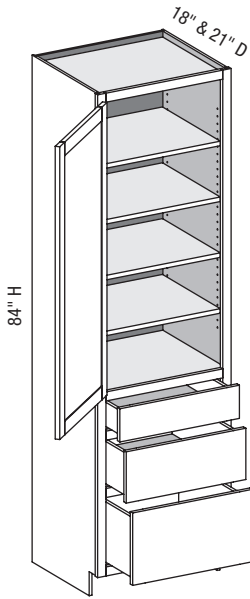
Custom Size Ranges  
Width: 24" – 36"  
Height: 84" – 120"  
Depth: 5-1/2" – 30"

- Matching specie interior is not available over 96" high. Natural Birch UV material will be used.
- When height changes, upper opening height changes. Lower opening height fixed at 56".
- 84" – 90" high has six shelves.
- 90-1/16" – 96" high has seven shelves.
- 96-1/16" – 108" high has eight shelves.
- 108-1/16" – 120" high has nine shelves.
- Separate 4" high toe platform is available with all cabinet heights.
- Specify single or butt doors on custom size cabinets 24" wide.

Cabinet Code
VUC2484BD

**Options Key:** EXP = Exposed End(s) FL = Flush End(s) FUE = Flush Unexposed End(s) SS = Shaped Side PFD = Prep for False Door  
EXT = Extended Stile(s) FT = Flush Toe SBR = Shaped Bottom Rail LE = Leg Extension TSS = Toe Space Side OS = Omit Shelving  
NSH = No Shelf Holes WS = Solid Wood Shelves MI = Matching Interior DT = Dust Top NB = Natural Finished Bottom

### VL3V/CSVL3V - Vanity Linen Three Drawer Vanity Height



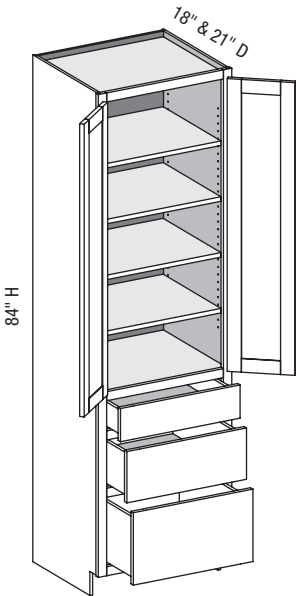
EXP	FL	FUE	SS	PFD	EXT	FT	SBR	LE	TSS	OS	NSH	WS	MI	DT	NB
✓	✓	✓	✓	✓	✓	✓	✓	✓	✓	✓	✓	✓	✓		

Custom Size Ranges  
 Width: 12" – 24"  
 Height: 84" – 120"  
 Depth: 12", 15", 18", 21"  
 24", 27", 30"

- Lower section aligns with 31-1/2" high vanity cabinets.
- Matching specie interior is not available over 96" high. Natural Birch UV material will be used.
- When height changes, upper opening height changes. Lower drawer opening heights fixed at 5", 8" and 8-1/2".
- 84" – 90" high has four shelves.
- 90-1/16" – 96" high has five shelves.
- 96-1/16" – 108" high has six shelves.
- 108-1/16" – 120" high has seven shelves.
- Separate 4" high toe platform is available with all cabinet heights.
- Specify single or butt doors on custom size cabinets 24" wide.

Cabinet Code	
VL3V1884	VL3V2484
VL3V2184	

### VL3V/CSVL3V - Vanity Linen Three Drawer Vanity Height w/Butt Doors



EXP	FL	FUE	SS	PFD	EXT	FT	SBR	LE	TSS	OS	NSH	WS	MI	DT	NB
✓	✓	✓	✓	✓	✓	✓	✓	✓	✓	✓	✓	✓	✓		

Custom Size Ranges  
 Width: 24" – 36"  
 Height: 84" – 120"  
 Depth: 12", 15", 18", 21"  
 24", 27", 30"

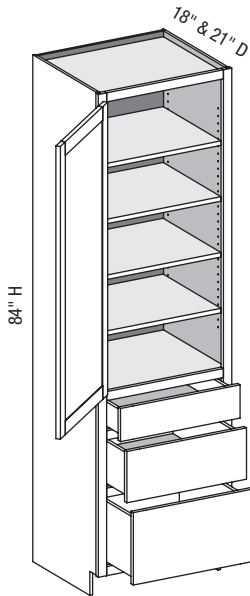
- Lower section aligns with 31-1/2" high vanity cabinets.
- Matching specie interior is not available over 96" high. Natural Birch UV material will be used.
- When height changes, upper opening height changes. Lower drawer opening heights fixed at 5", 8" and 8-1/2".
- 84" – 90" high has four shelves.
- 90-1/16" – 96" high has five shelves.
- 96-1/16" – 108" high has six shelves.
- 108-1/16" – 120" high has seven shelves.
- Separate 4" high toe platform is available with all cabinet heights.
- Specify single or butt doors on custom size cabinets 24" wide.

Cabinet Code
VL3V2484BD

**Options Key:** EXP = Exposed End(s) FL = Flush End(s) FUE = Flush Unexposed End(s) SS = Shaped Side PFD = Prep for False Door  
 EXT = Extended Stile(s) FT = Flush Toe SBR = Shaped Bottom Rail LE = Leg Extension TSS = Toe Space Side OS = Omit Shelving  
 NSH = No Shelf Holes WS = Solid Wood Shelves MI = Matching Interior DT = Dust Top NB = Natural Finished Bottom



**VL3B/CSU3D - Vanity Linen Three Drawer Base Height**



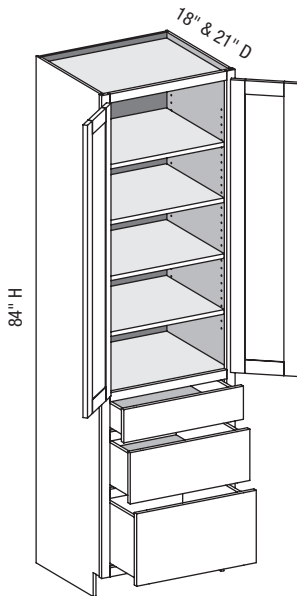
EXP	FL	FUE	SS	PFD	EXT	FT	SBR	LE	TSS	OS	NSH	WS	MI	DT	NB
✓	✓	✓	✓	✓	✓	✓	✓	✓	✓	✓	✓	✓	✓		

Custom Size Ranges  
Width: 12" – 24"  
Height: 84" – 120"  
Depth: 12", 15", 18", 21"  
24", 27", 30"

- Lower section aligns with 34-1/2" high vanity cabinets.
- Matching specie interior is not available over 96" high. Natural Birch UV material will be used.
- When height changes, upper opening height changes. Lower drawer opening heights fixed at 5", 8" and 11-1/2".
- 84" – 90" high has four shelves.
- 90-1/16" – 96" high has five shelves.
- 96-1/16" – 108" high has six shelves.
- 108-1/16" – 120" high has seven shelves.
- Separate 4" high toe platform is available with all cabinet heights.
- Specify single or butt doors on custom size cabinets 24" wide.

Cabinet Code	
VL3B1884	VL3B2484
VL3B2184	

**VL3B/CSU3D - Vanity Linen Three Drawer Base Height w/Butt Doors**



EXP	FL	FUE	SS	PFD	EXT	FT	SBR	LE	TSS	OS	NSH	WS	MI	DT	NB
✓	✓	✓	✓	✓	✓	✓	✓	✓	✓	✓	✓	✓	✓		

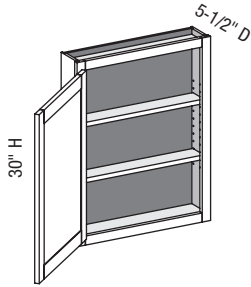
Custom Size Ranges  
Width: 24" – 36"  
Height: 84" – 120"  
Depth: 12", 15", 18", 21"  
24", 27", 30"

- Lower section aligns with 34-1/2" high vanity cabinets.
- Matching specie interior is not available over 96" high. Natural Birch UV material will be used.
- When height changes, upper opening height changes. Lower drawer opening heights fixed at 5", 8" and 11-1/2".
- 84" – 90" high has four shelves.
- 90-1/16" – 96" high has five shelves.
- 96-1/16" – 108" high has six shelves.
- 108-1/16" – 120" high has seven shelves.
- Separate 4" high toe platform is available with all cabinet heights.
- Specify single or butt doors on custom size cabinets 24" wide.

Cabinet Code
VL3B2484BD

**Options Key:** EXP = Exposed End(s) FL = Flush End(s) FUE = Flush Unexposed End(s) SS = Shaped Side PFD = Prep for False Door  
EXT = Extended Stile(s) FT = Flush Toe SBR = Shaped Bottom Rail LE = Leg Extension TSS = Toe Space Side OS = Omit Shelving  
NSH = No Shelf Holes WS = Solid Wood Shelves MI = Matching Interior DT = Dust Top NB = Natural Finished Bottom

### VW/CSW - Vanity Wall



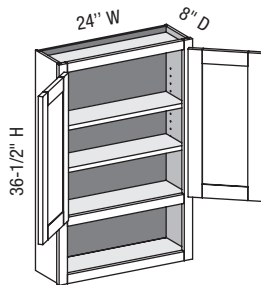
EXP	FL	FUE	SS	PFD	EXT	FT	SBR	LE	TSS	OS	NSH	WS	MI	DT	NB
✓	✓	✓		✓	✓					✓	✓	✓	✓		✓

Custom Size Ranges  
 Width: 9" – 36"  
 Height: 12" – 48"  
 Depth: 5-1/2" – 30"

- 12" – 18" high has no shelves.
- 18-1/16" – 24" high has one shelf.
- 24-1/16" – 36" high has two shelves.
- 36-1/16" – 48" high has three shelves.
- Specify single or butt doors on custom size cabinets 24" wide.

30" High	
VW1230	VW1830
VW1530	VW2430

### WWS/CSWS - Vanity Wall Shelf w/Butt Doors



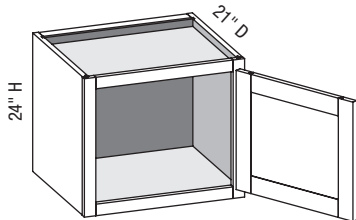
EXP	FL	FUE	SS	PFD	EXT	FT	SBR	LE	TSS	OS	NSH	WS	MI	DT	NB
✓	✓	✓		✓	✓					✓	✓	✓	✓		✓

Custom Size Ranges  
 Width: 24" – 36"  
 Height: 24" – 48"  
 Depth: 5-1/2" – 12-1/2"

- 8" high bottom opening – fixed.
- Lower section does not match exterior specie unless matching interior is ordered.

36" High
VWS2436.5BD

### WHV/CSWHV - Wall Hung Vanity



EXP	FL	FUE	SS	PFD	EXT	FT	SBR	LE	TSS	OS	NSH	WS	MI	DT	NB
✓	✓	✓		✓	✓					STD	STD		✓	STD	✓

Custom Size Ranges  
 Width: 21" – 24"  
 Height: 18" – 24"  
 Depth: 18" – 21"

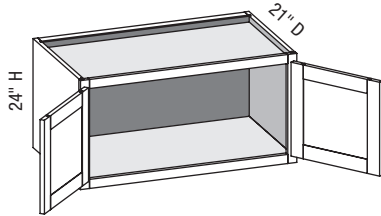
- Includes two precut 2 x 4 installation cleats.
- The load capacity of these cabinets is greatly dependent on the quality of the installation screws and whether the cabinets are secured into the wall studs. If not secured into two or more studs, using high quality installation screws the cabinet may not support the desired weight.
- Conestoga will not be responsible for cabinet failure due to inadequate installation techniques or materials.

24" High
WHV2124
WHV2424

**Options Key:** EXP = Exposed End(s) FL = Flush End(s) FUE = Flush Unexposed End(s) SS = Shaped Side PFD = Prep for False Door  
 EXT = Extended Stile(s) FT = Flush Toe SBR = Shaped Bottom Rail LE = Leg Extension TSS = Toe Space Side OS = Omit Shelving  
 NSH = No Shelf Holes WS = Solid Wood Shelves MI = Matching Interior DT = Dust Top NB = Natural Finished Bottom

**WHV/CSWHV - Wall Hung Vanity w/Butt Doors**

EXP	FL	FUE	SS	PFD	EXT	FT	SBR	LE	TSS	OS	NSH	WS	MI	DT	NB
✓	✓	✓		✓	✓					STD	STD		✓	STD	✓



Custom Size Ranges  
Width: 24" – 36"  
Height: 18" – 24"  
Depth: 18" – 21"

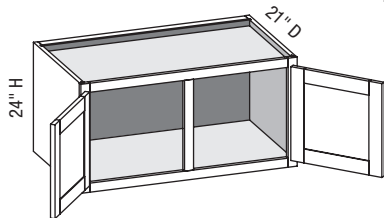
- Includes two precut 2 x 4 installation cleats.
- The load capacity of these cabinets is greatly dependent on the quality of the installation screws and whether the cabinets are secured into the wall studs. If not secured into two or more studs, using high quality installation screws the cabinet may not support the desired weight.
- Conestoga will not be responsible for cabinet failure due to inadequate installation techniques or materials.

**24" High**

WHV2424BD	WHV3324BD
WHV2724BD	WHV3624BD
WHV3024BD	

**WHV/CSWHVCS - Wall Hung Vanity w/Center Stile**

EXP	FL	FUE	SS	PFD	EXT	FT	SBR	LE	TSS	OS	NSH	WS	MI	DT	NB
✓	✓	✓		✓	✓					STD	STD		✓	STD	✓



Custom Size Ranges  
Width: 27" – 48"  
Height: 18" – 24"  
Depth: 18" – 21"

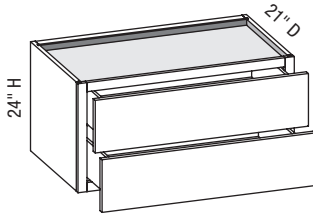
- Includes two precut 2 x 4 installation cleats.
- The load capacity of these cabinets is greatly dependent on the quality of the installation screws and whether the cabinets are secured into the wall studs. If not secured into two or more studs, using high quality installation screws the cabinet may not support the desired weight.
- Conestoga will not be responsible for cabinet failure due to inadequate installation techniques or materials.

**24" High**

WHV2724	WHV3924
WHV3024	WHV4224
WHV3324	WHV4524
WHV3624	WHV4824

## WHV2D/CSWHV2D - Wall Hung Vanity Two Drawers

EXP	FL	FUE	SS	PFD	EXT	FT	SBR	LE	TSS	OS	NSH	WS	MI	DT	NB
✓	✓	✓		✓	✓					STD	STD		✓	STD	✓



Custom Size Ranges  
 Width: 21" – 36"  
 Height: 18" – 24"  
 Depth: 18", 21"

- Includes two precut 2 x 4 installation cleats.
- Drawer boxes are 6" less than the depth of the cabinet to accommodate inset drawers and hardware.
- The load capacity of these cabinets is greatly dependent on the quality of the installation screws and whether the cabinets are secured into the wall studs. If not secured into two or more studs, using high quality installation screws the cabinet may not support the desired weight.
- Conestoga will not be responsible for cabinet failure due to inadequate installation techniques or materials.

24" High	
WHV2D2124	WHV2D3024
WHV2D2424	WHV2D3324
WHV2D2724	WHV2D3624